



Université Badji Mokhtar -Annaba-
Faculté des sciences de la terre
Département de Géologie



Les Algues (Récapitulatif)

Matière: Biologie 2

Enseignante: DAFRI A.

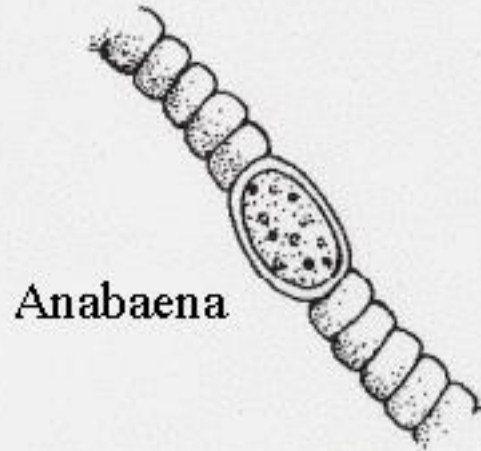
Niveau: L1 Géologie

Promotion: 2014/2015

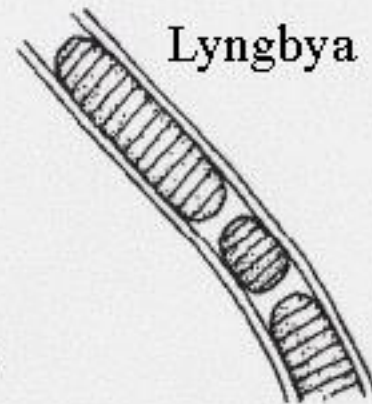
Cyanophyceae

Anabaena circinalis

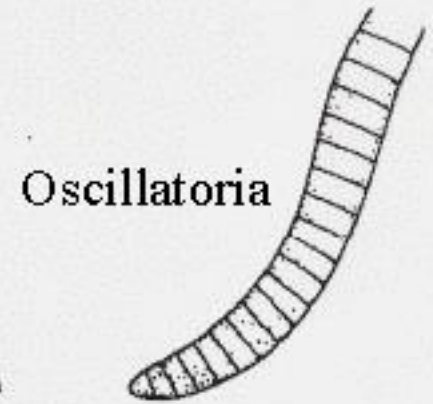
Cyanophycées



Anabaena



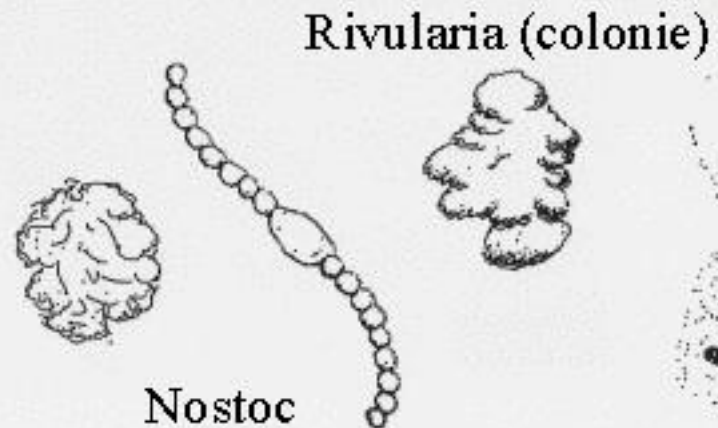
Lyngbya



Oscillatoria



Rivularia
(filament)



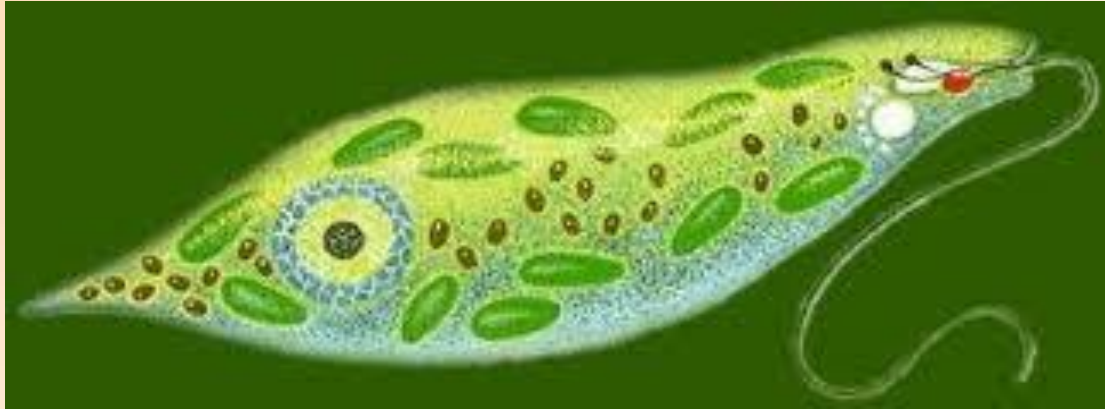
Rivularia (colonie)

Nostoc
colonie et filament



Gloeocapsa

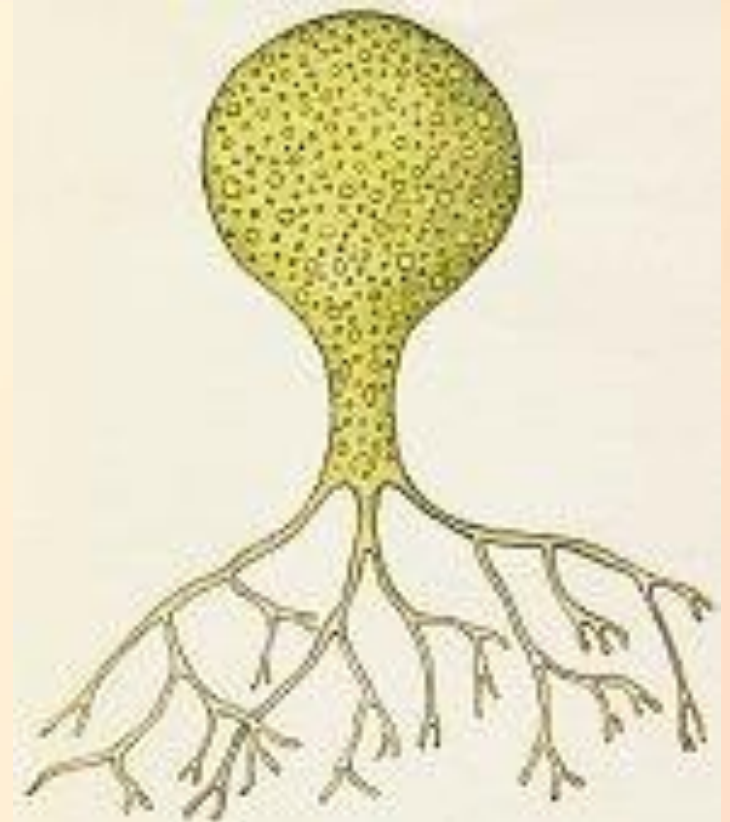
Euglenophyceae



Xanthophyceae



Centritractus belonophorus



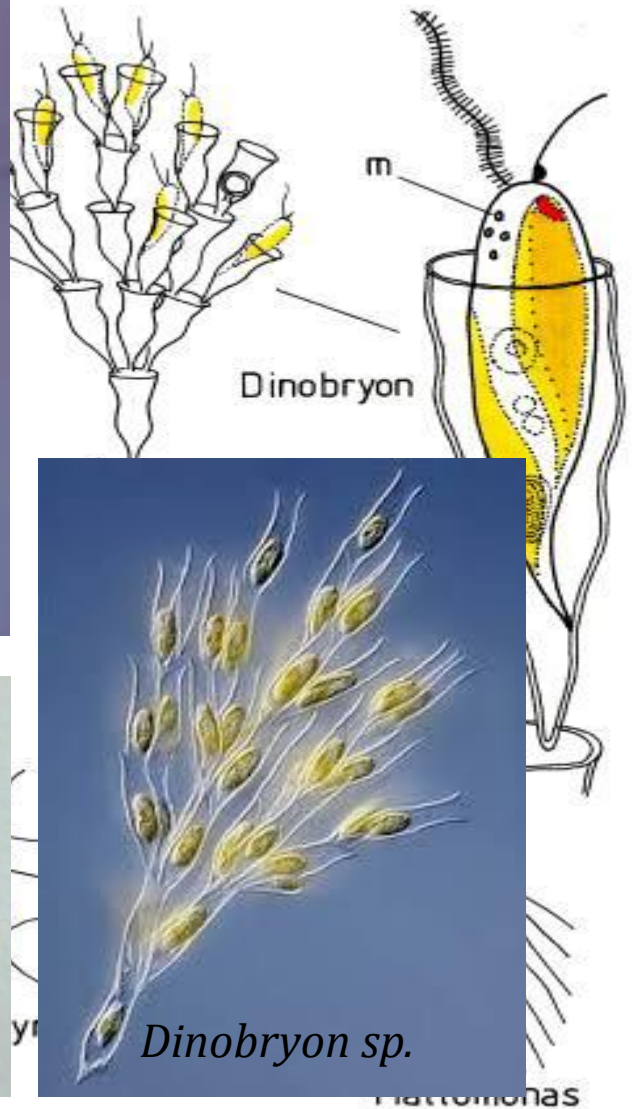
Botrydium granulatum

Chrysophyceae

CHRYSOPHYCEAE



Dinobryon sp.



Synuropsis



Dinobryon sp.

C Chrysolaminarin
M muciferous body

Plattomonas

Phaeophyceae

P
H
A
E
O
P
H
Y
C
E
A
E

Ectocarpus



Tilopteris



Cutleria



Desmarestia



Laminaria



Sphacelaria



Sporochnus



Dicotyota



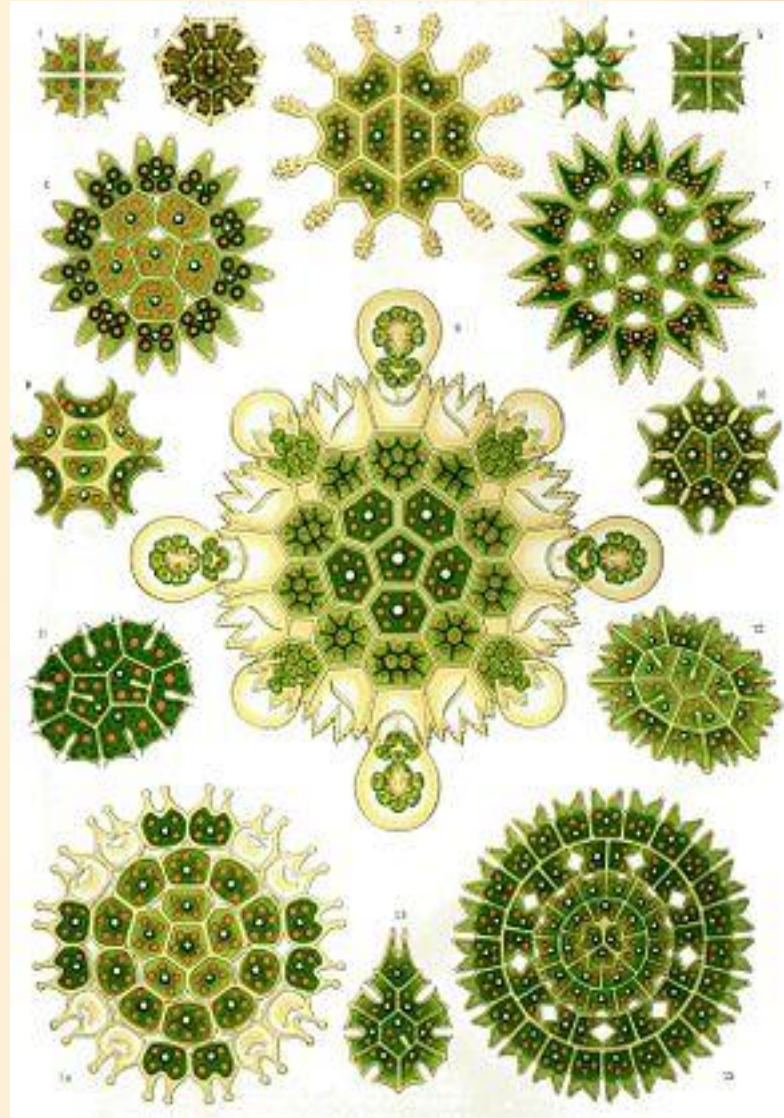
Sargassum



Rhodophyceae



Chlorophyceae



Bacillariophyceae

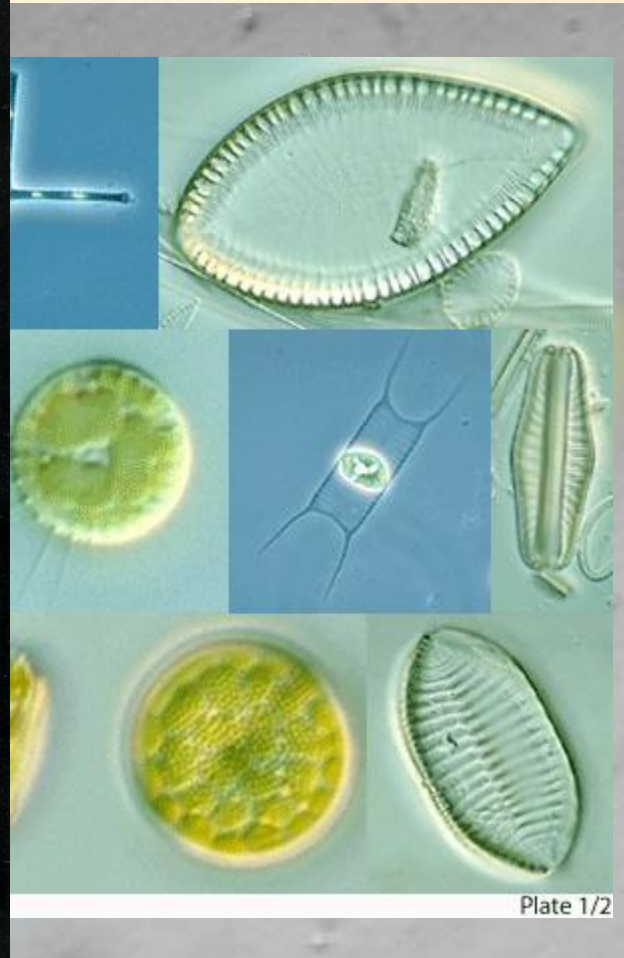
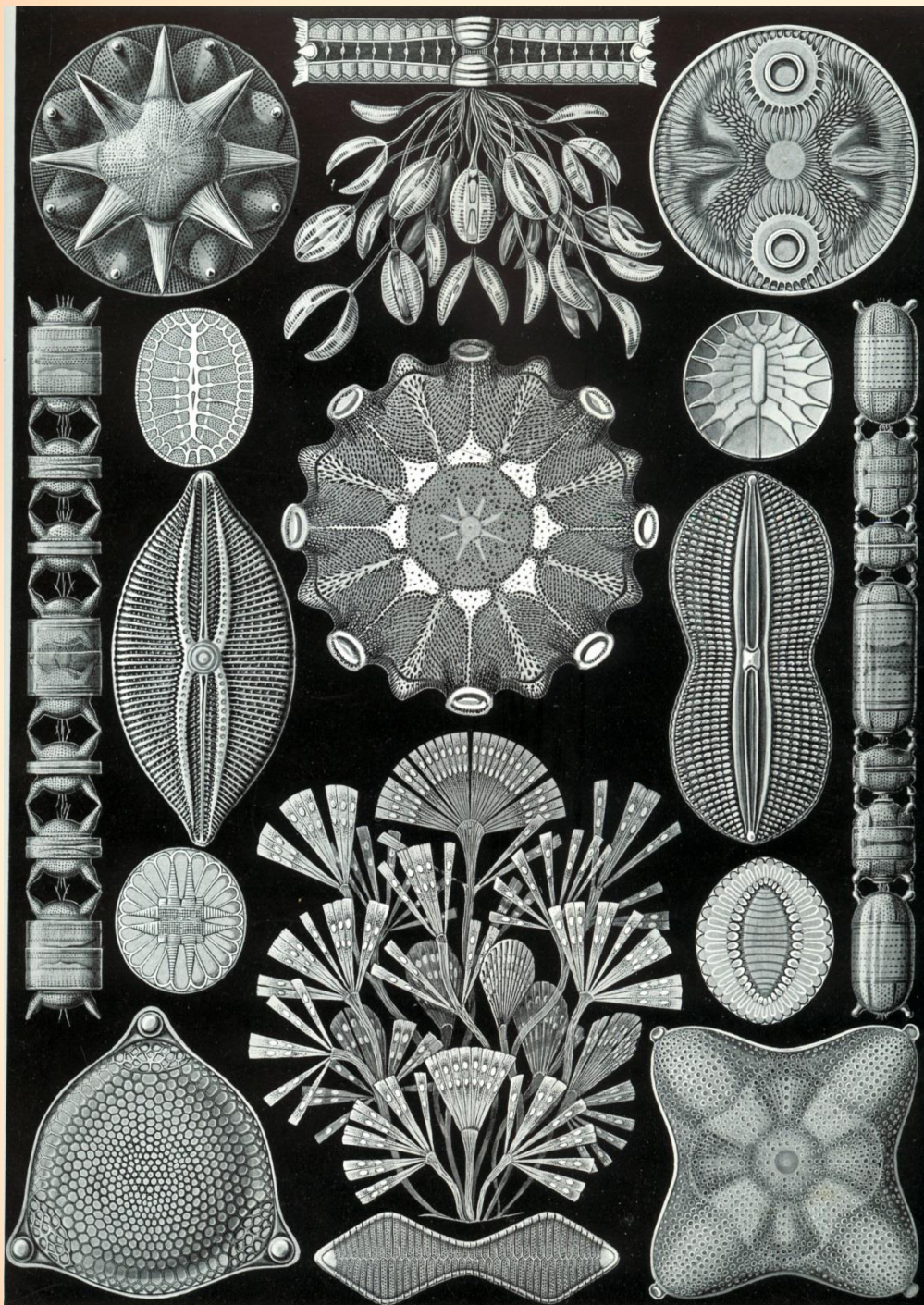


Plate 1/2



**Merci de votre
attention**