

L'appareil circulatoire et la circulation

A/INTRODUCTION –DEFINITION.

B/ANATOMIE DESCRIPTIVE

1/LE CŒUR

a/SITUATION

b/CONFIGURATION EXTERIEURE

c/CONFIGURATION INTERIEURE

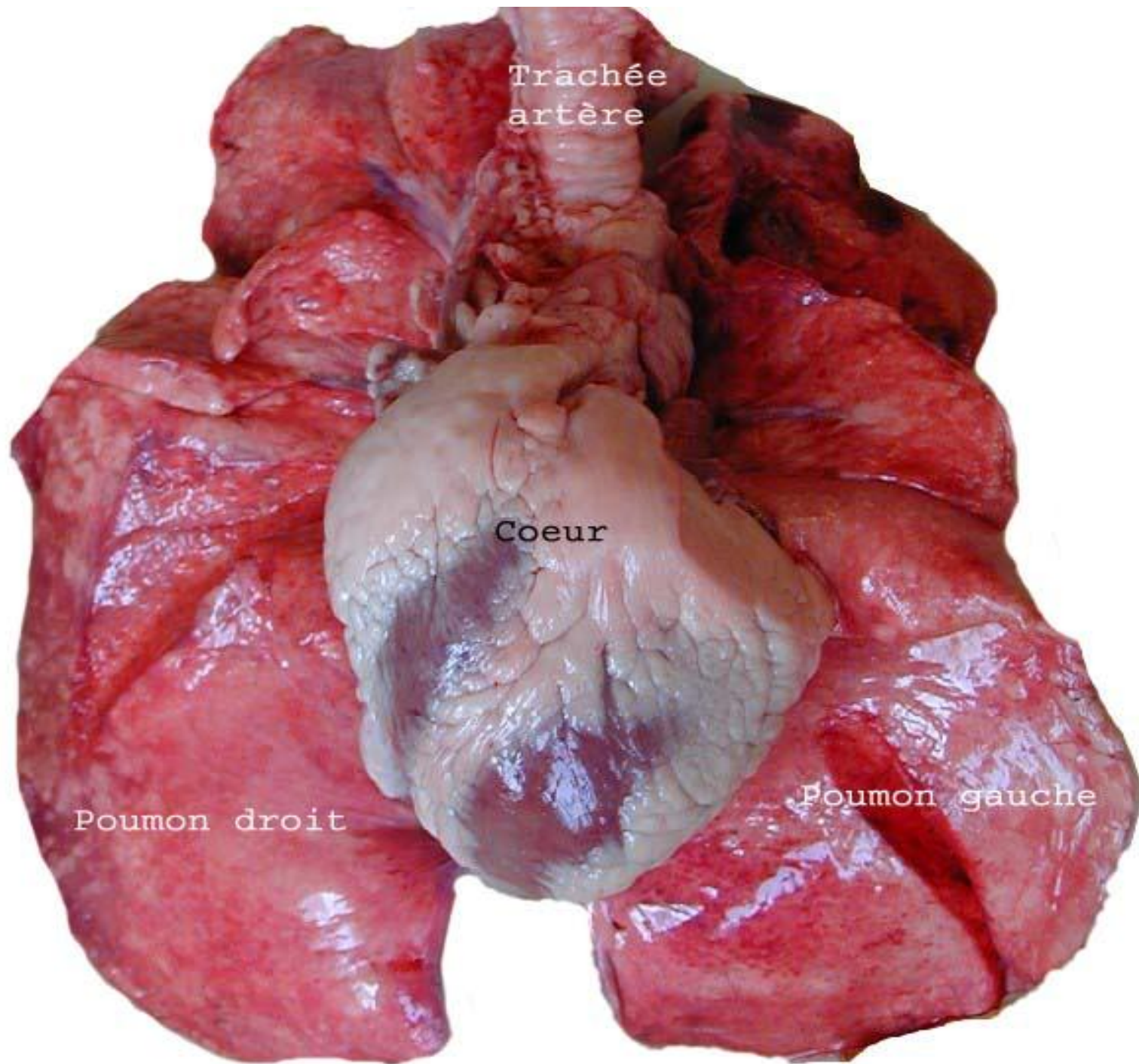
2/DISPOSITION GENERALE DU SYSTEME CIRCULATOIRE

3/DESCRIPTION DES PRINCIPAUX VAISSEUX

-LES ARTERES

-LES VEINES

-LES LYMPHATIQUES



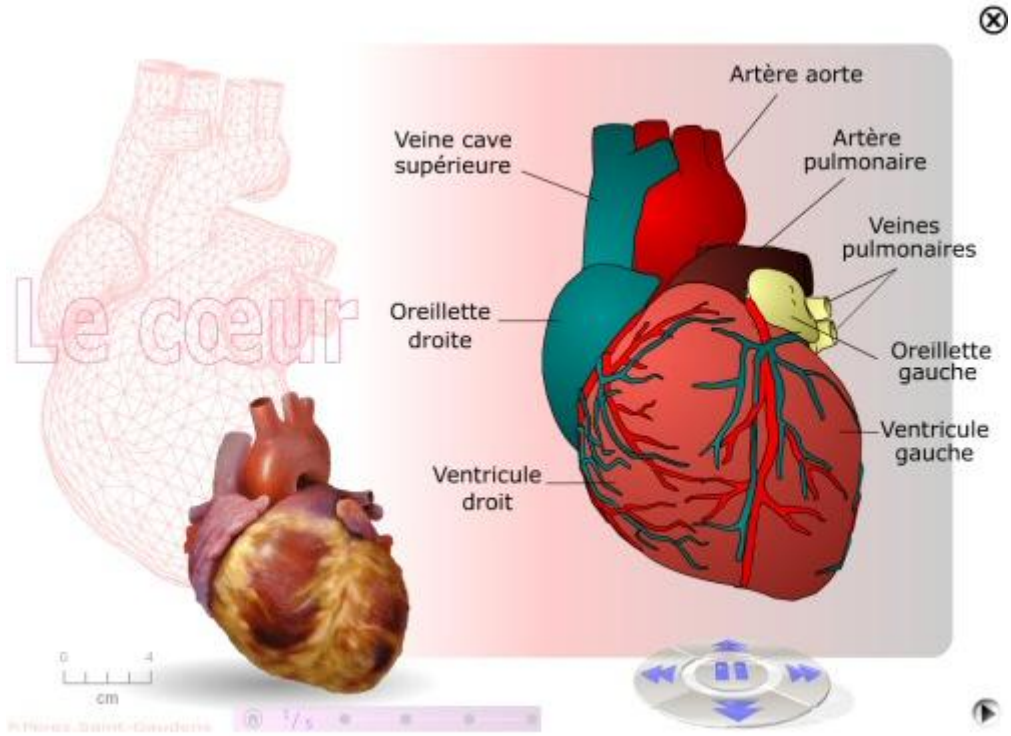
Trachée
artère

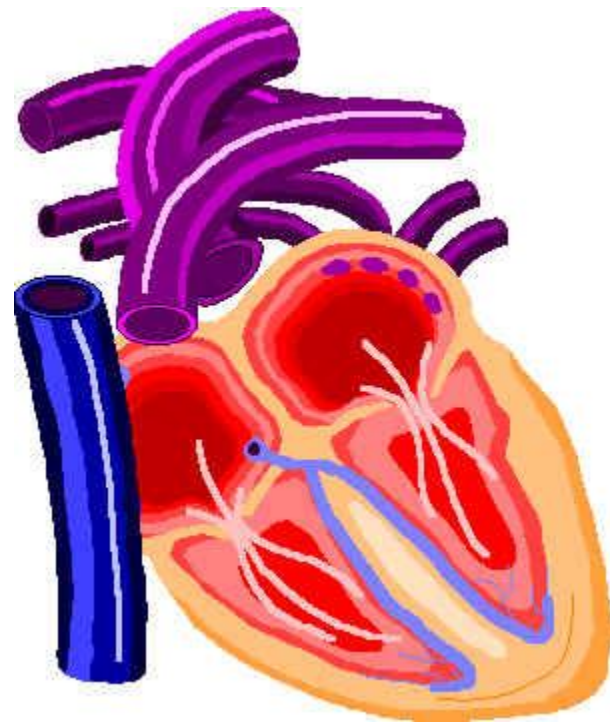
Coeur

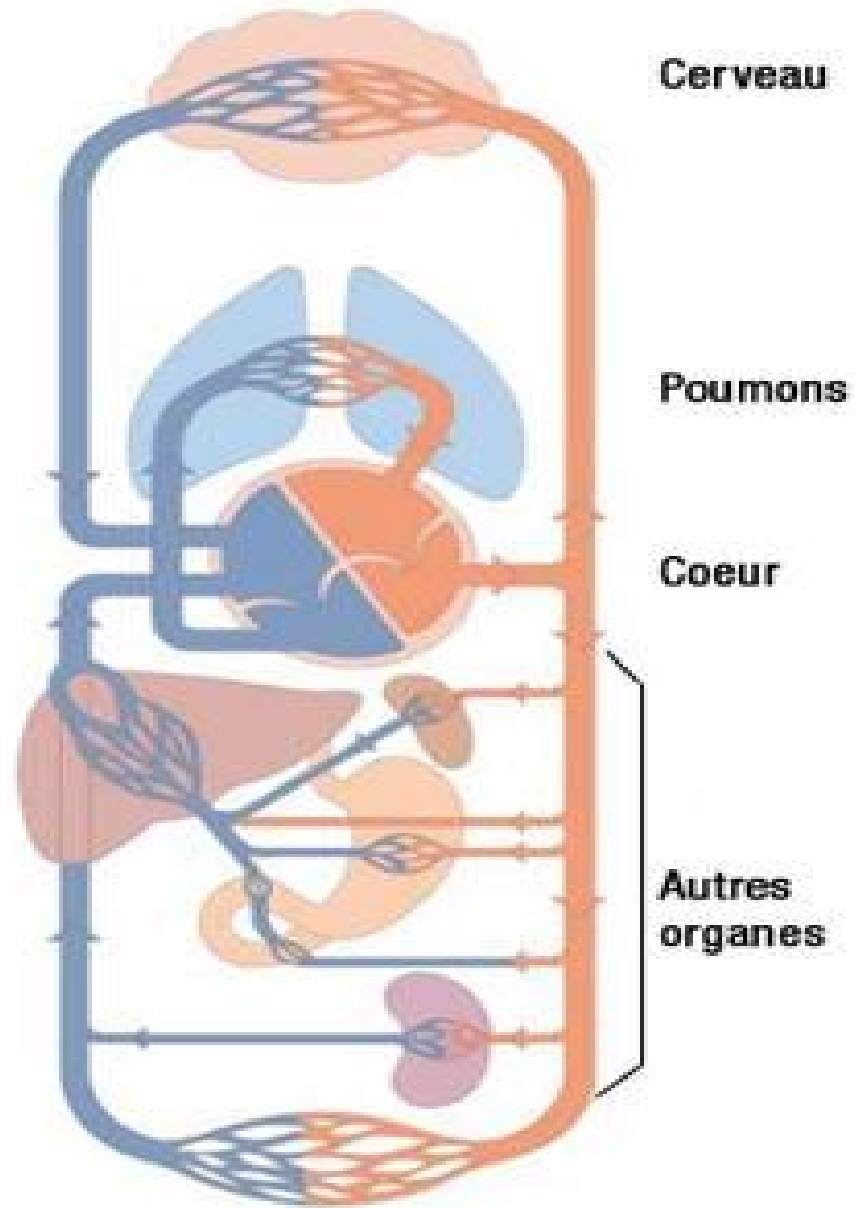
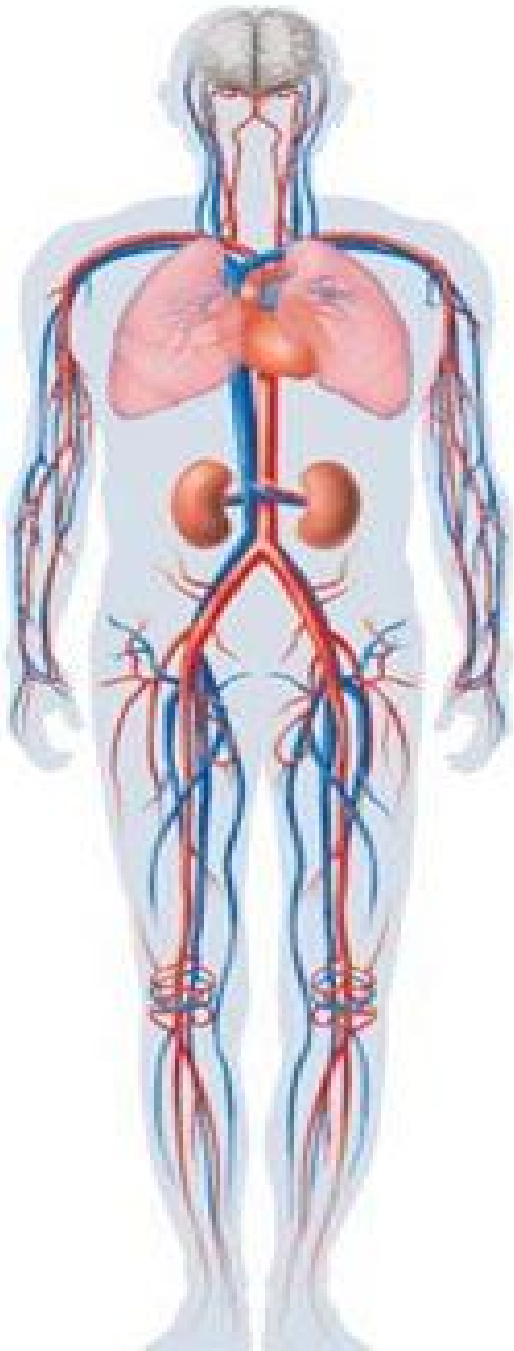
Poumon droit

Poumon gauche

Le cœur

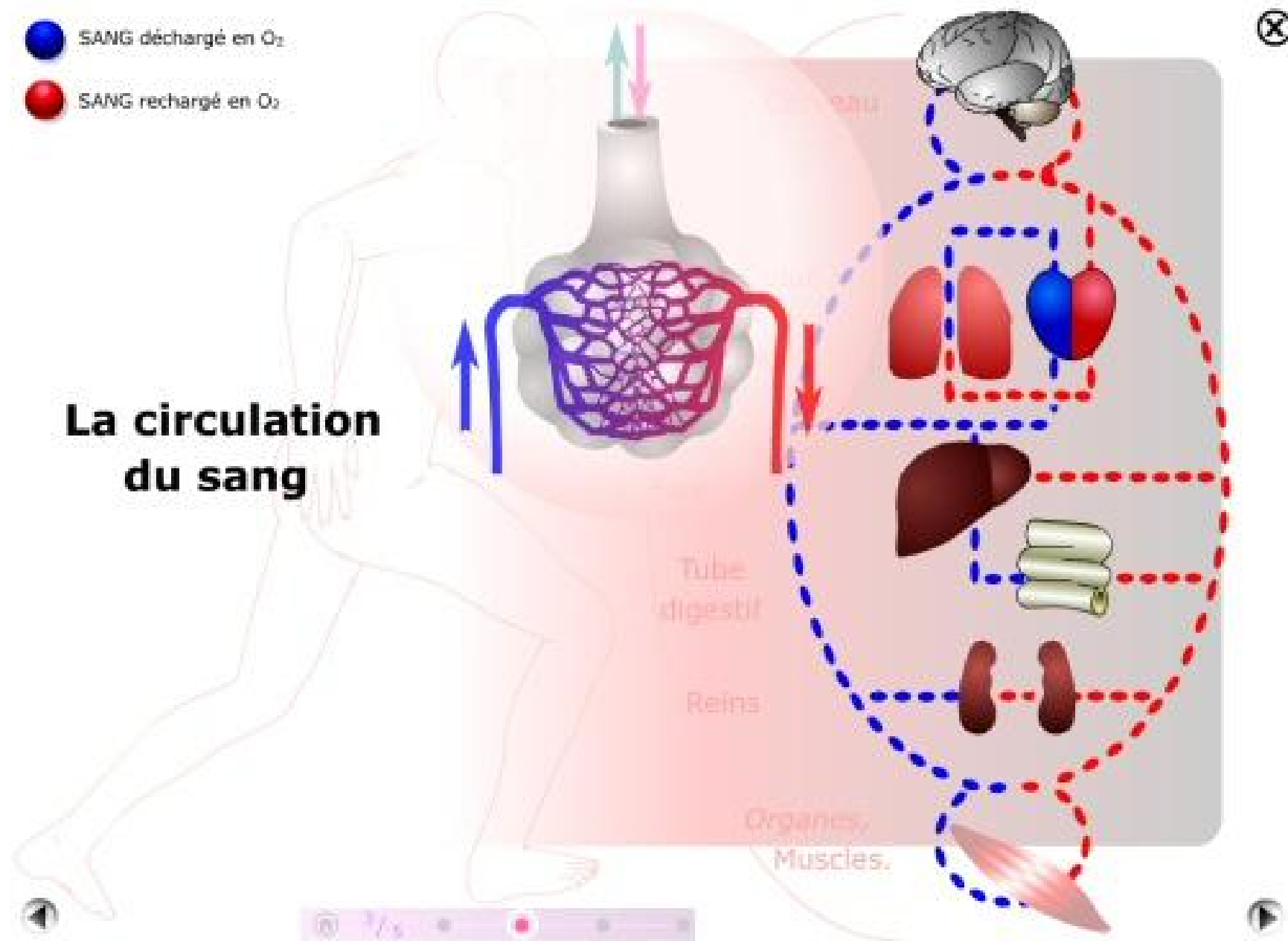




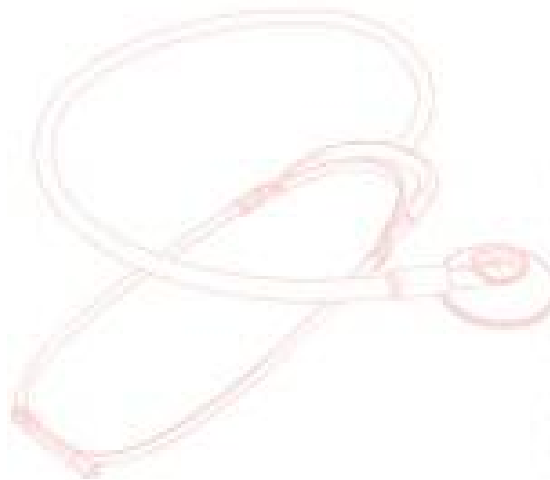


-  SANG déchargé en O₂
-  SANG rechargé en O₂

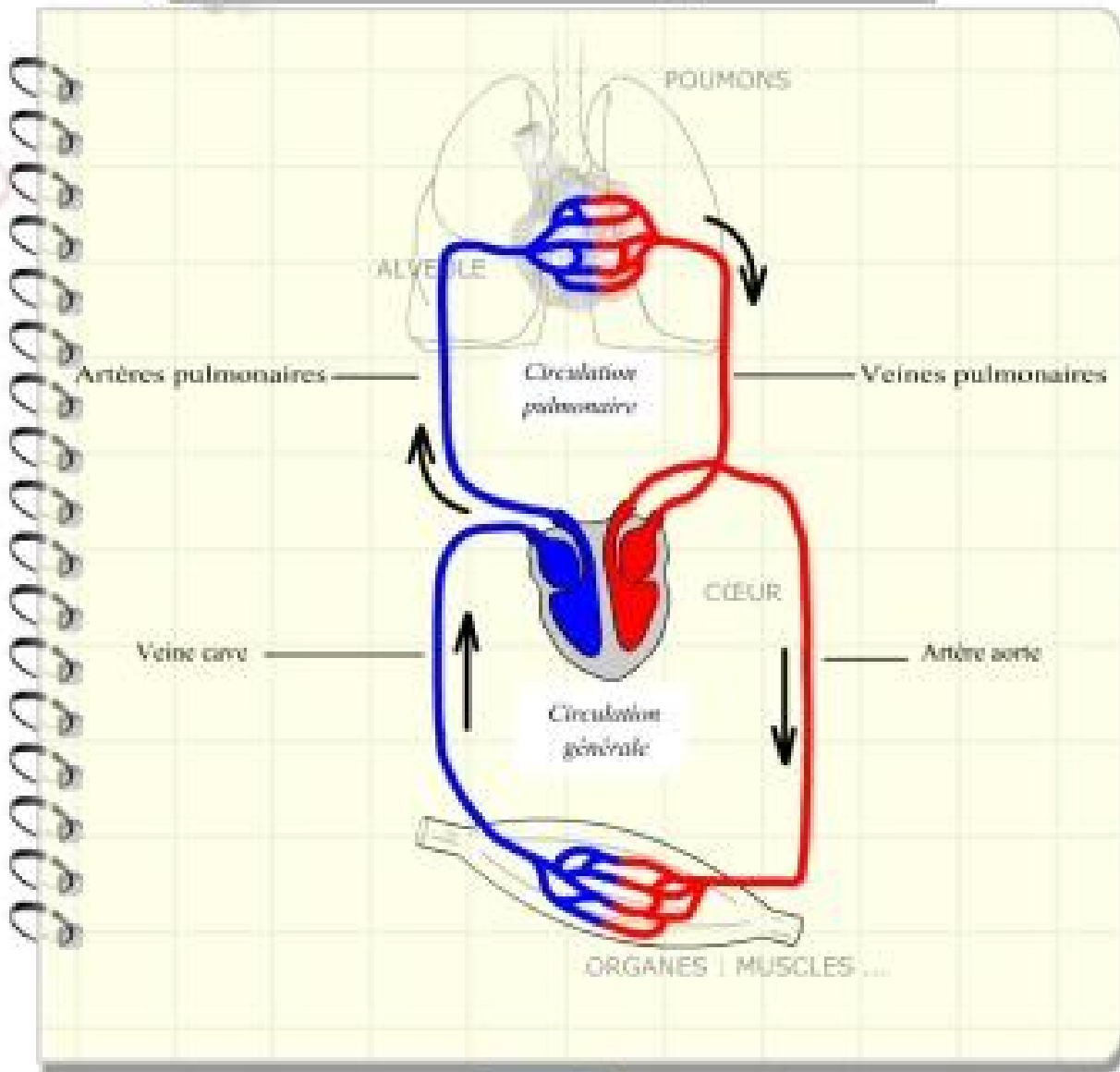
La circulation du sang



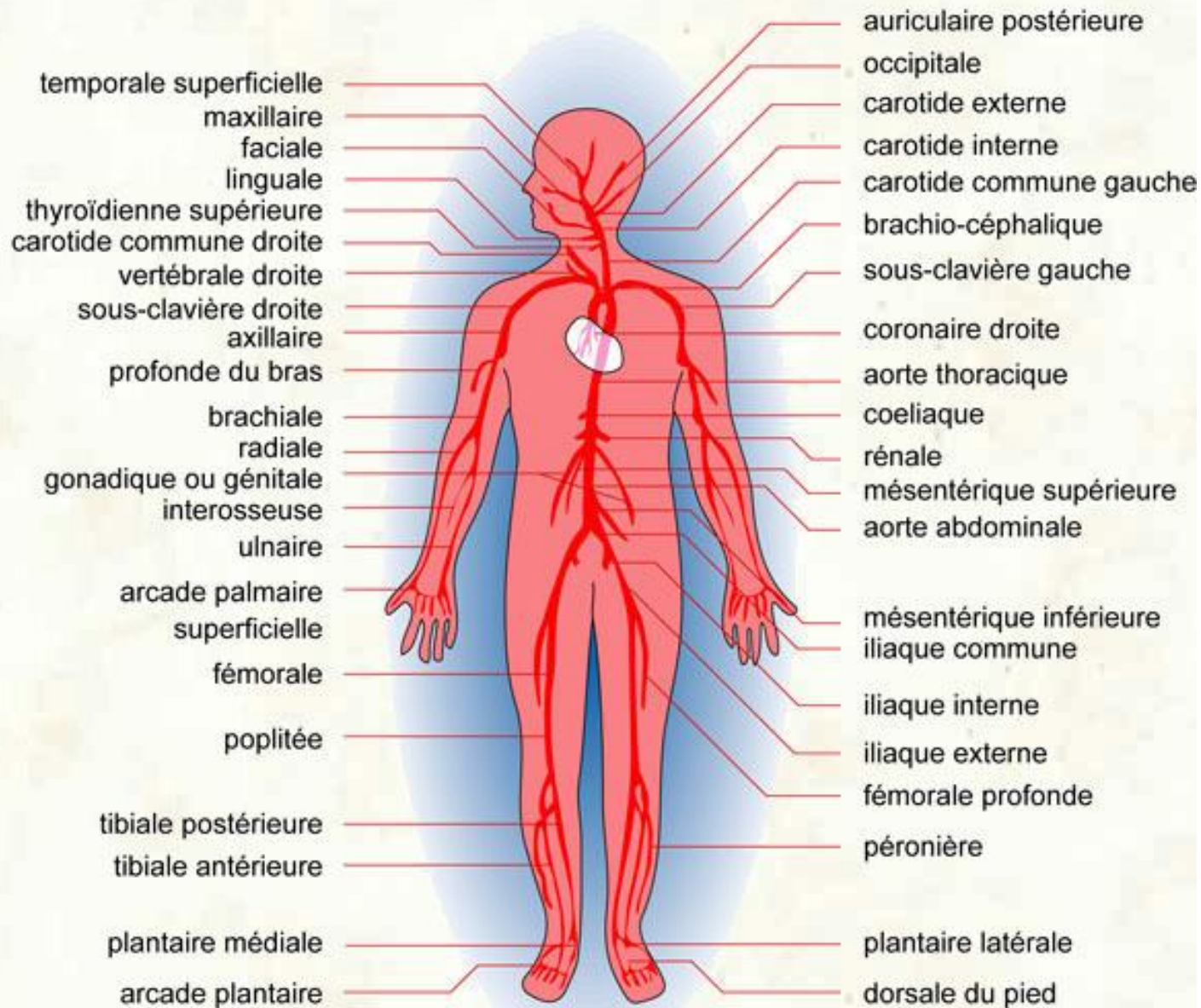
La circulation sanguine

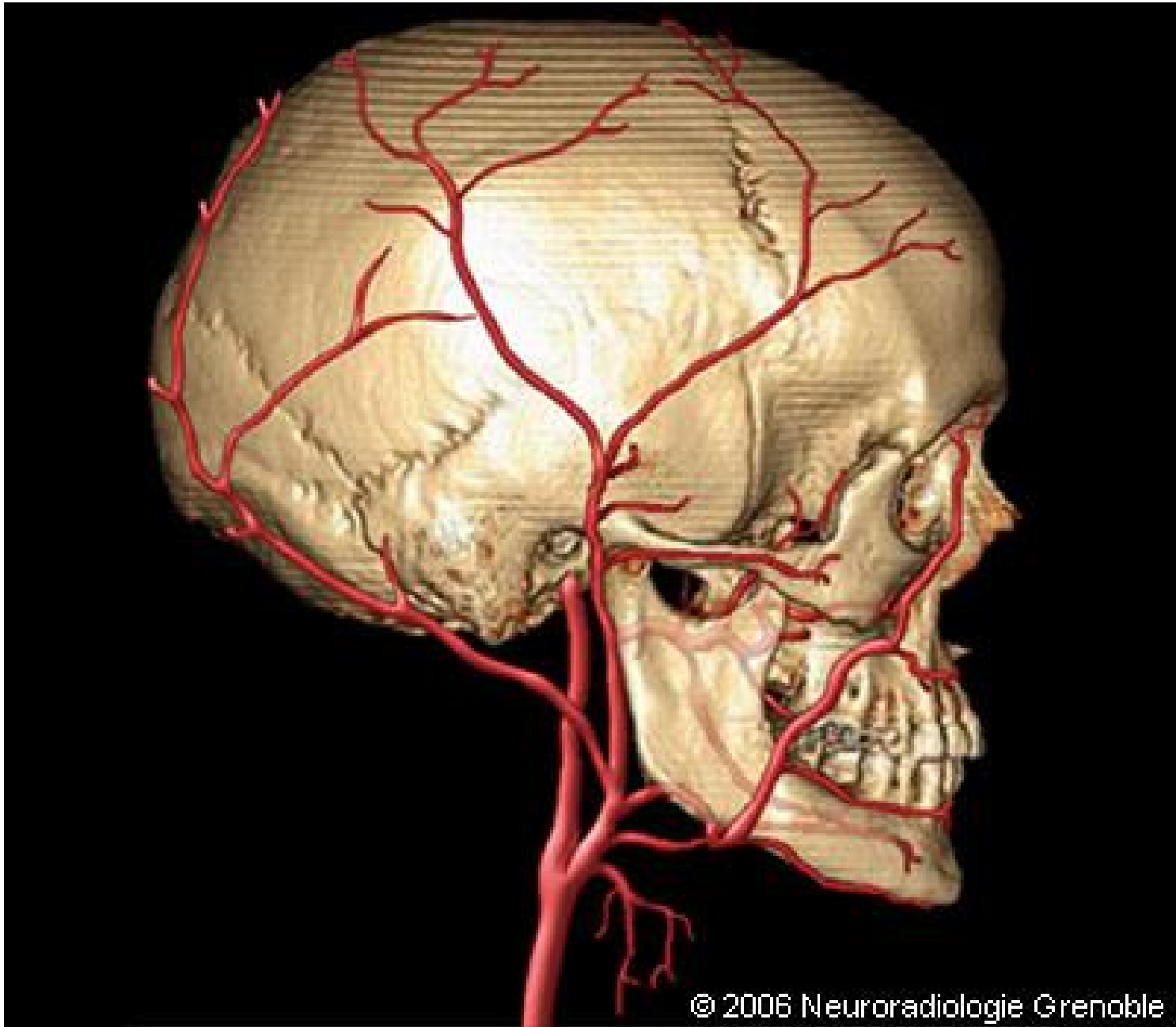


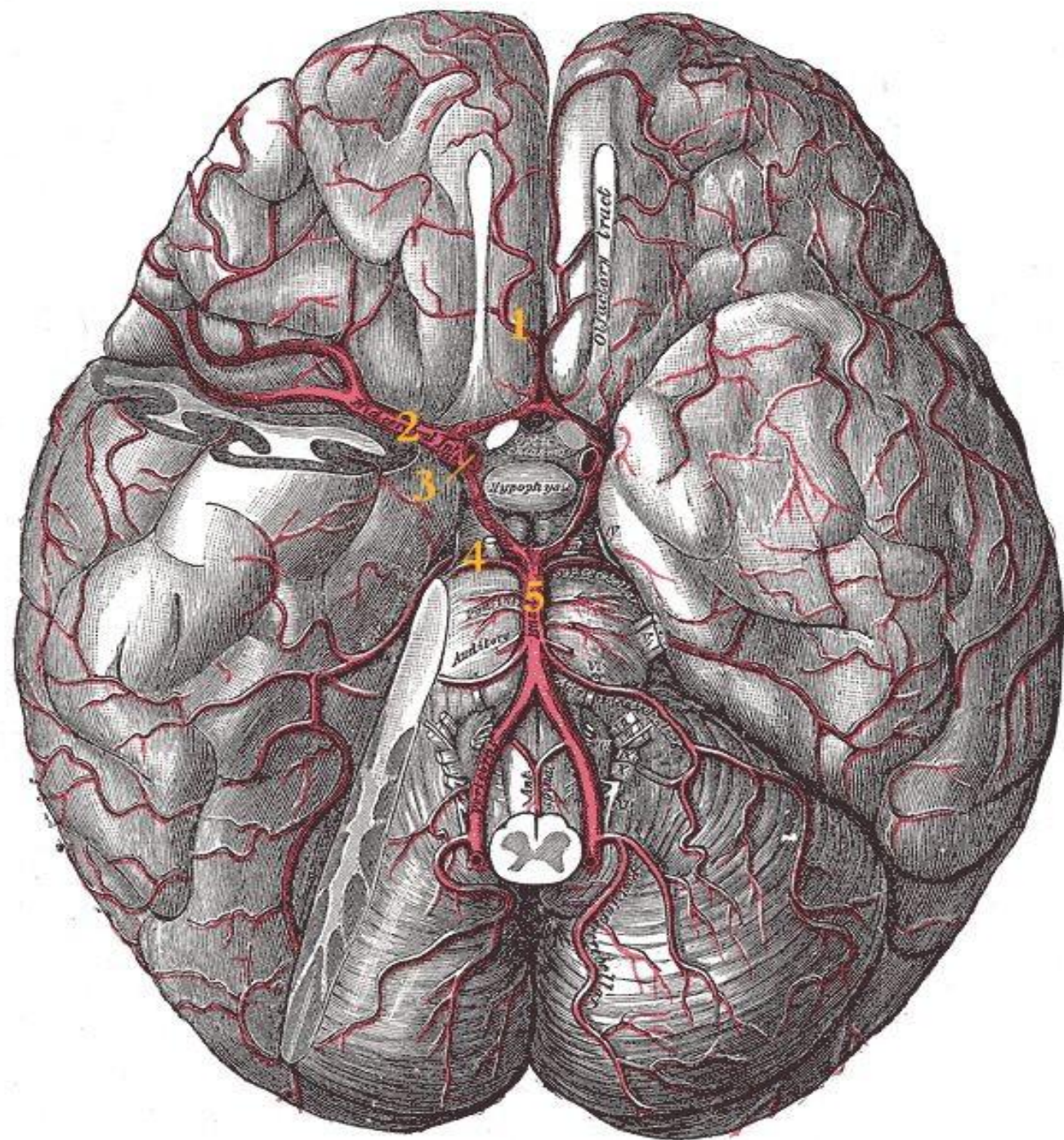
En **bleu** le sang déchargé en O_2 .
En **rouge** le sang rechargé en O_2 .

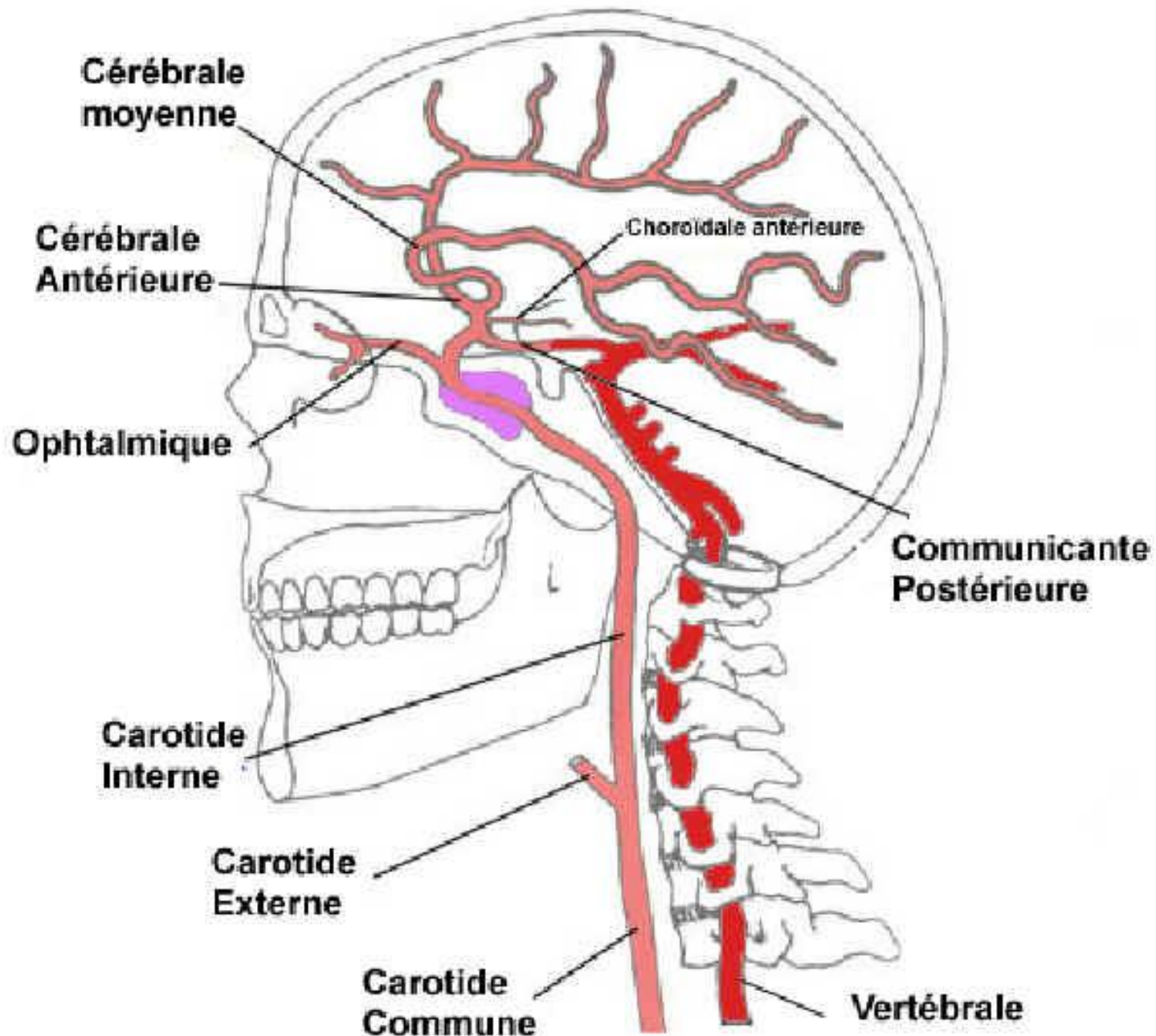


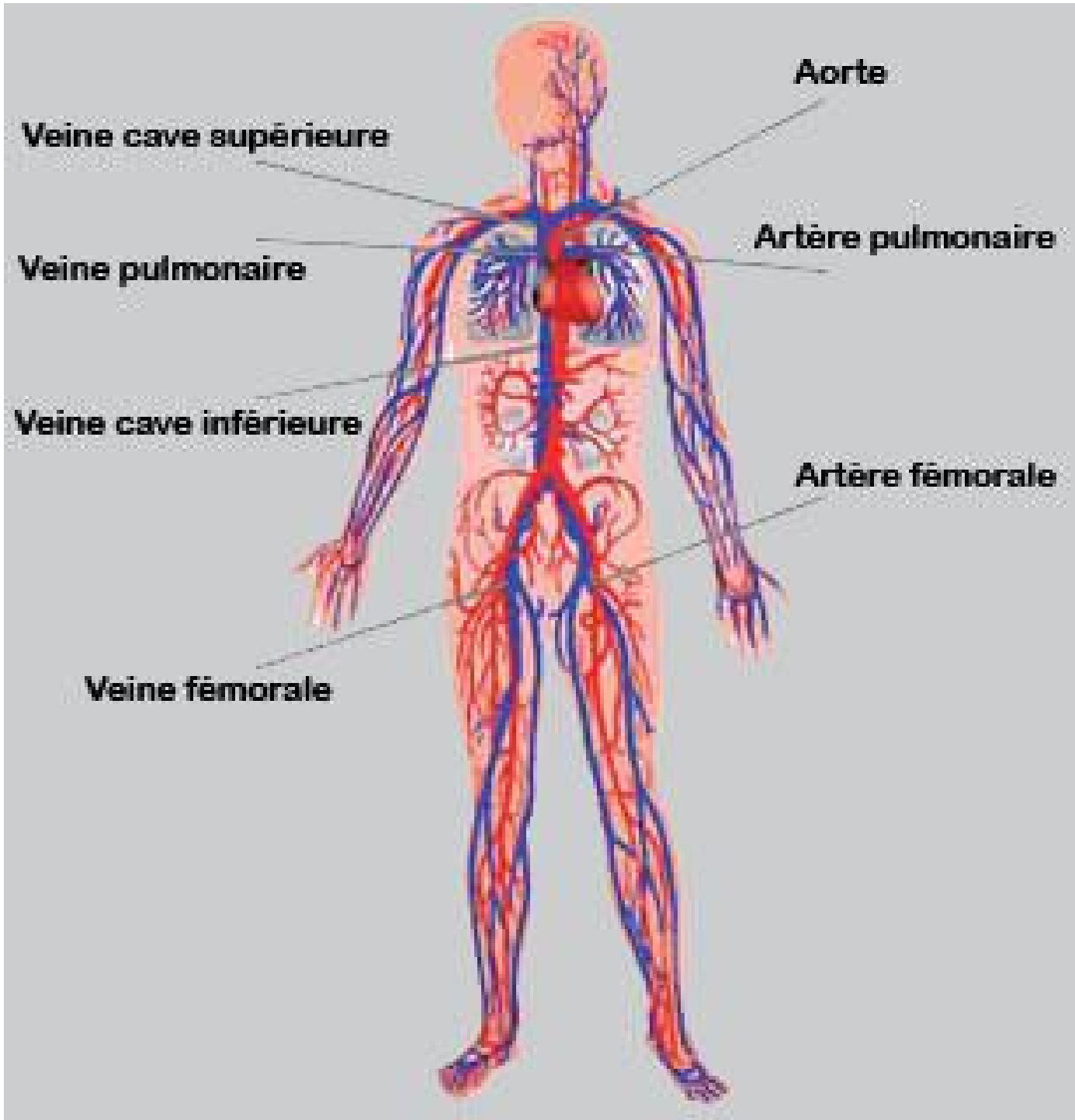
ARTÈRES DU CORPS

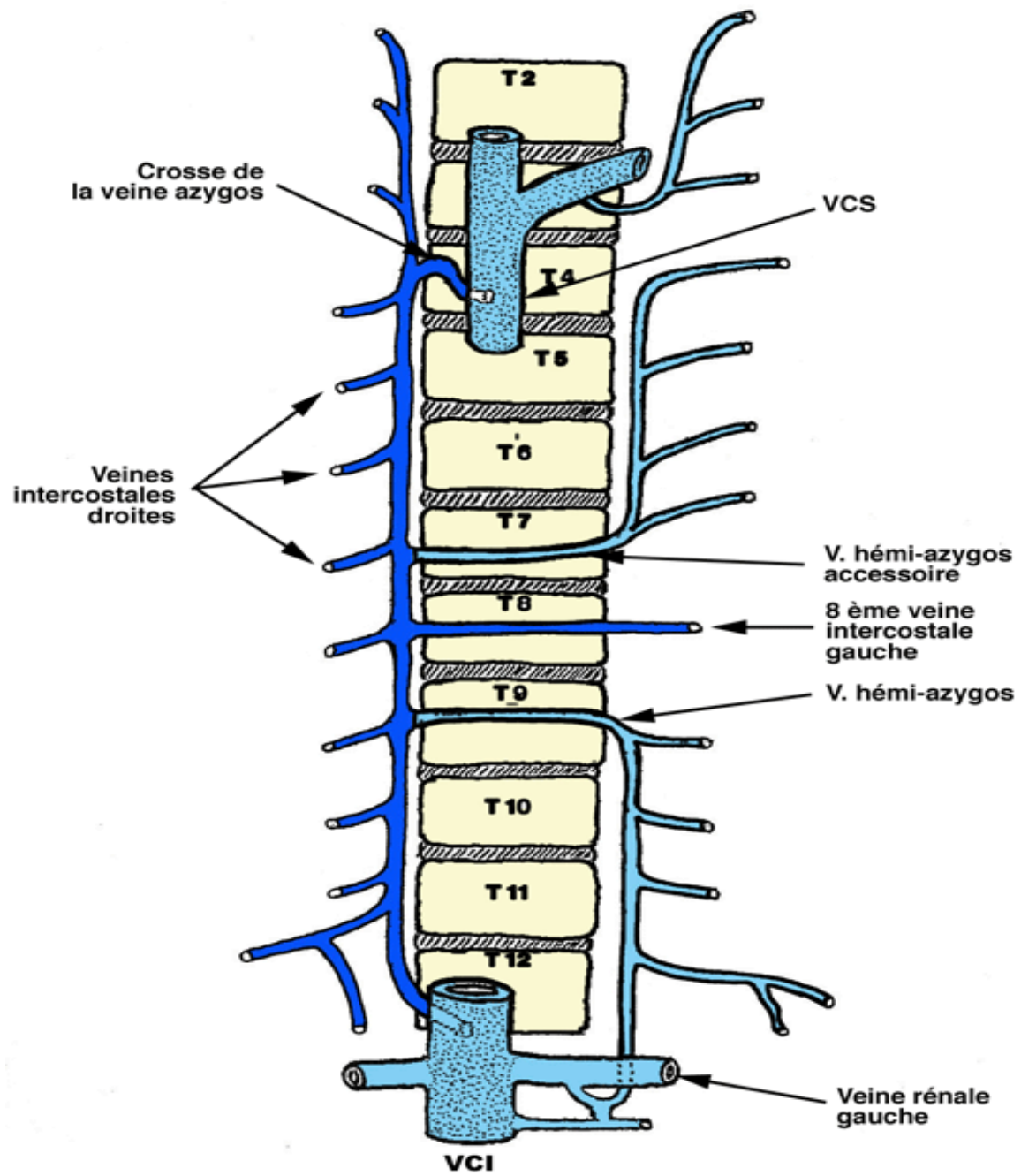


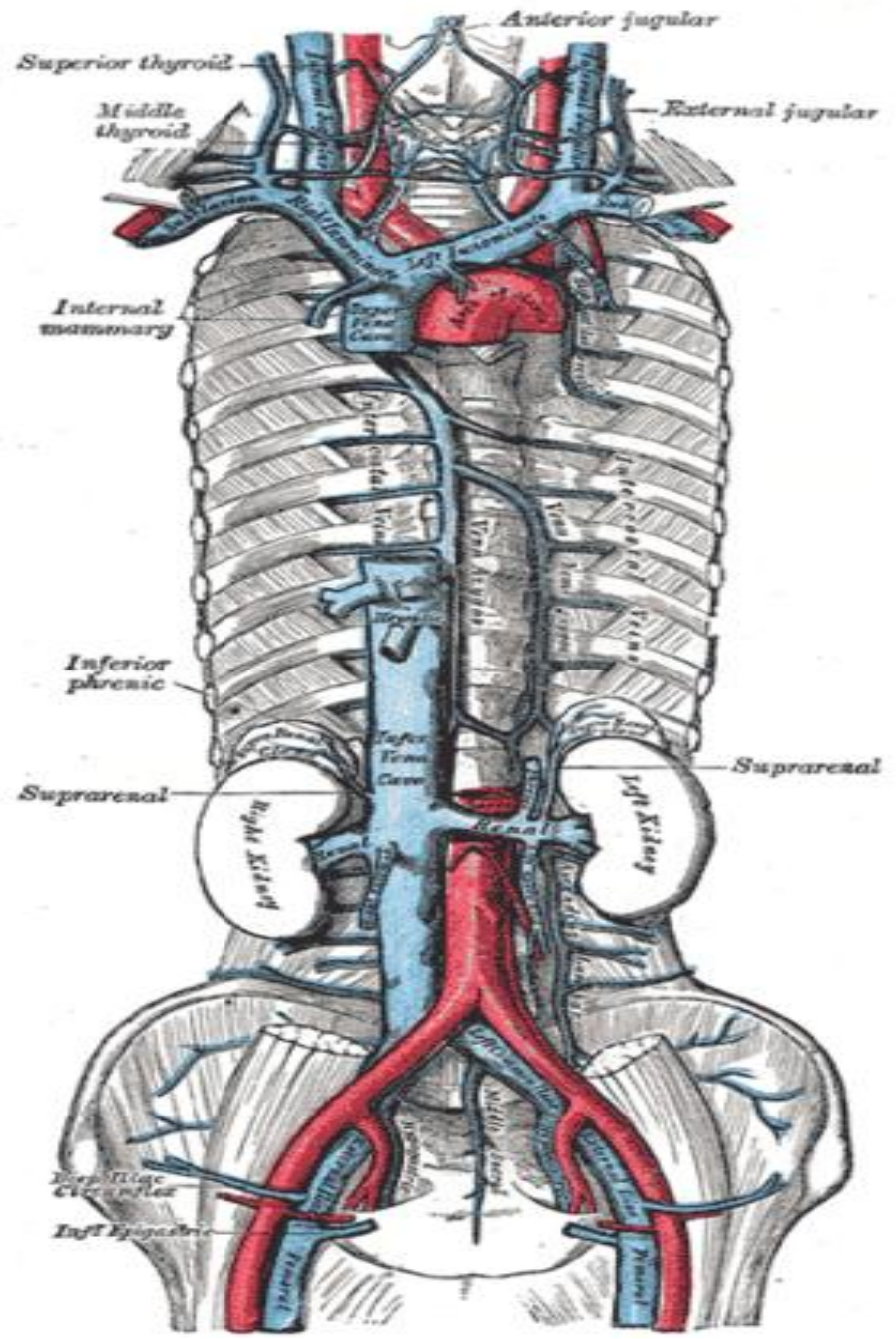


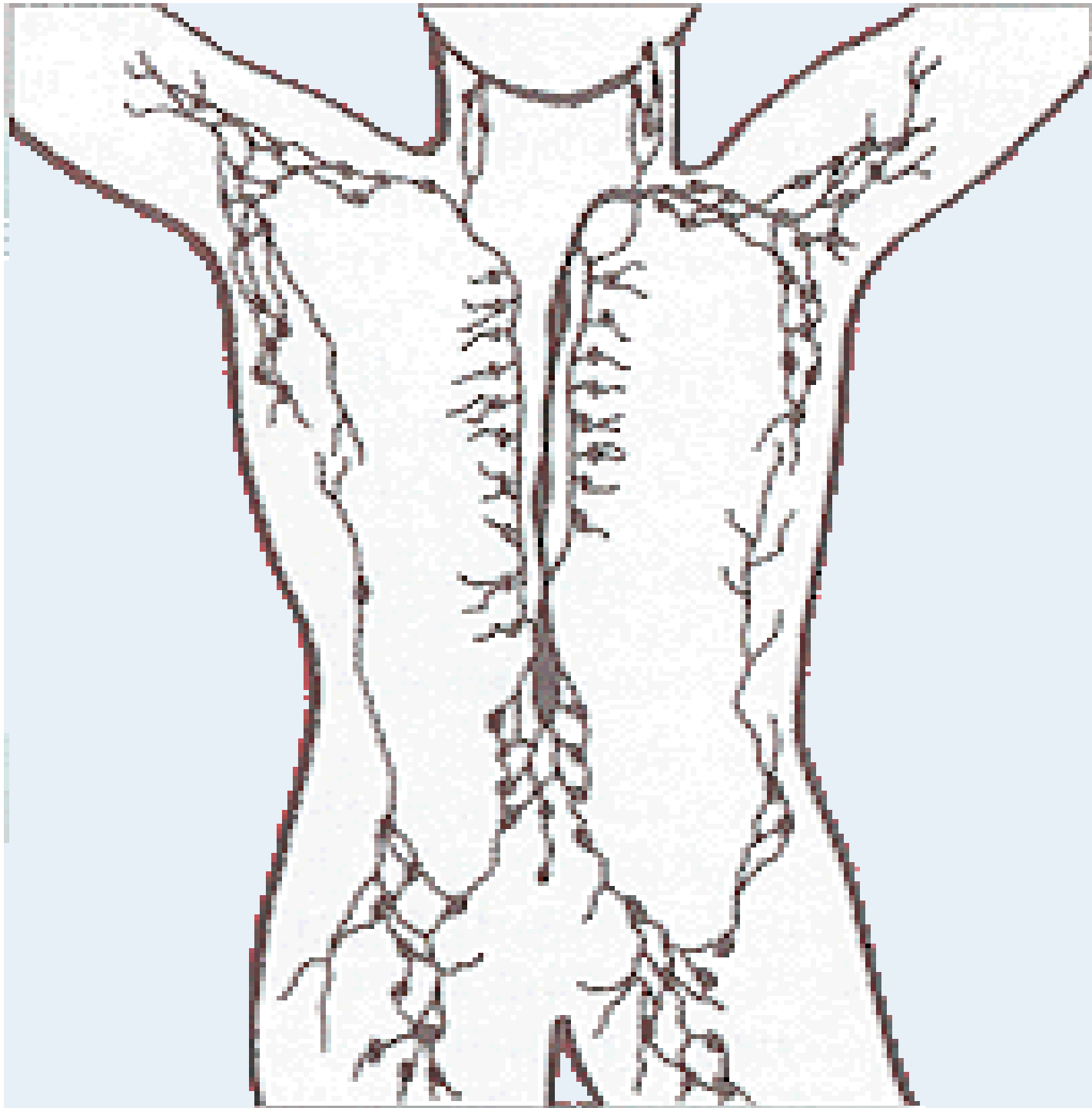












MERCI

Dr: H .Nacer