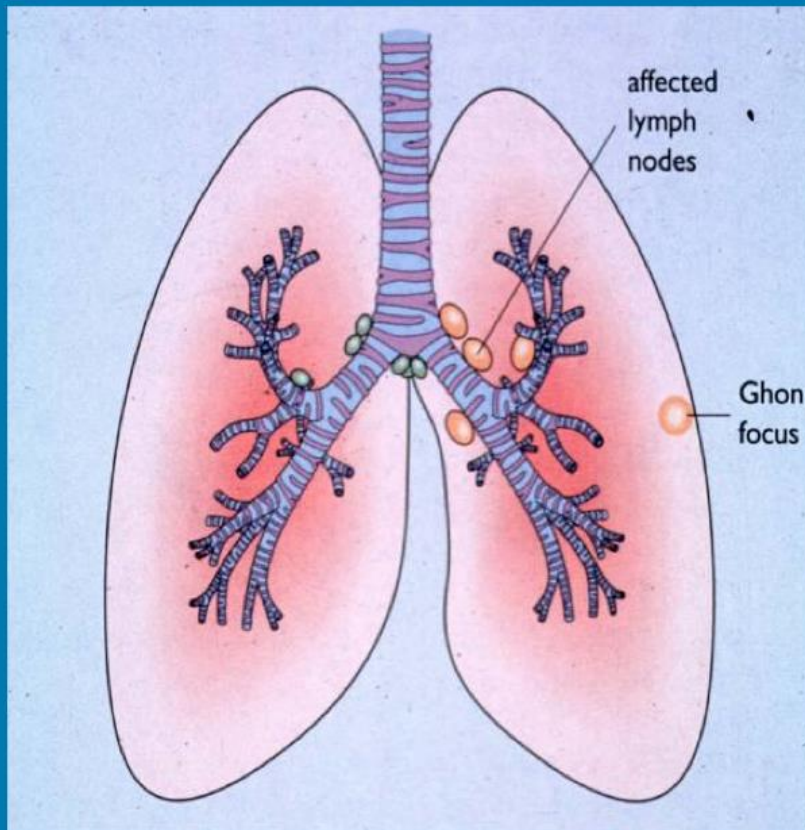


Lésions tuberculeuses: photos

Dr.K.Benabaddou

Département de Pathologie

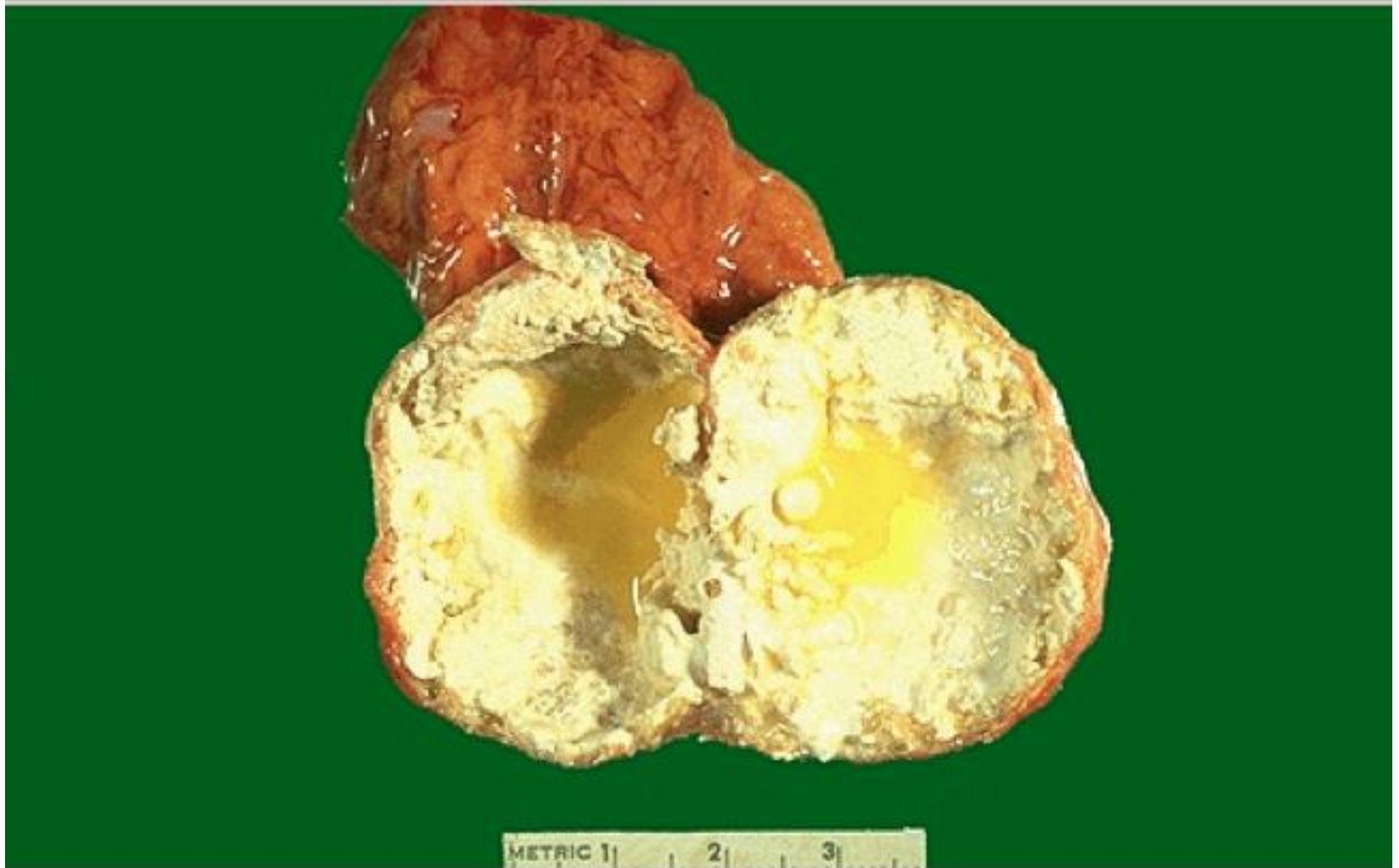
EHS Daksi



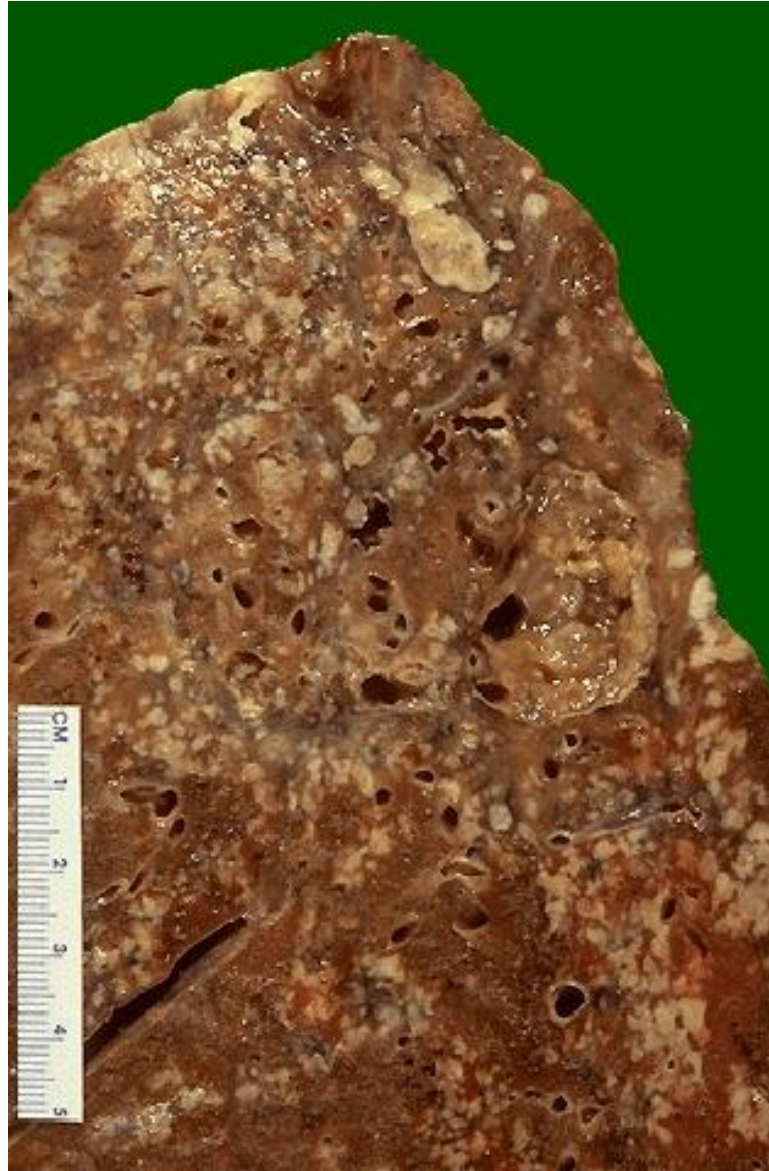
Tuberculose
primaire:
complex de Ghon

Stevens & Lowe, Pathology, 1995

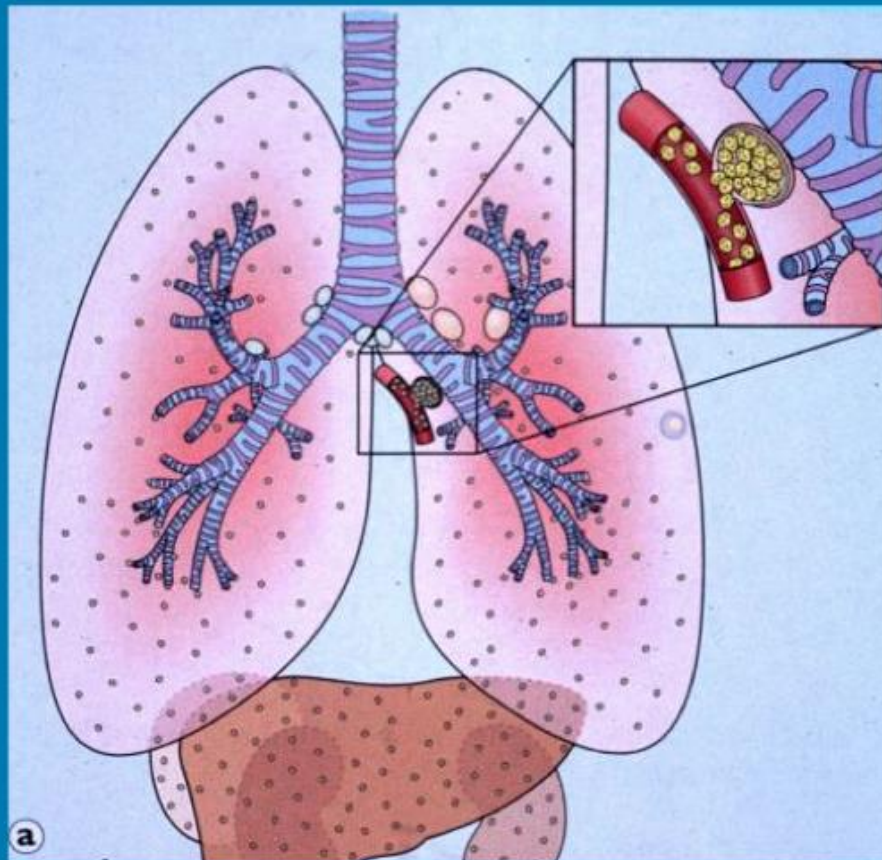
caséum



Granulomes avec caséum



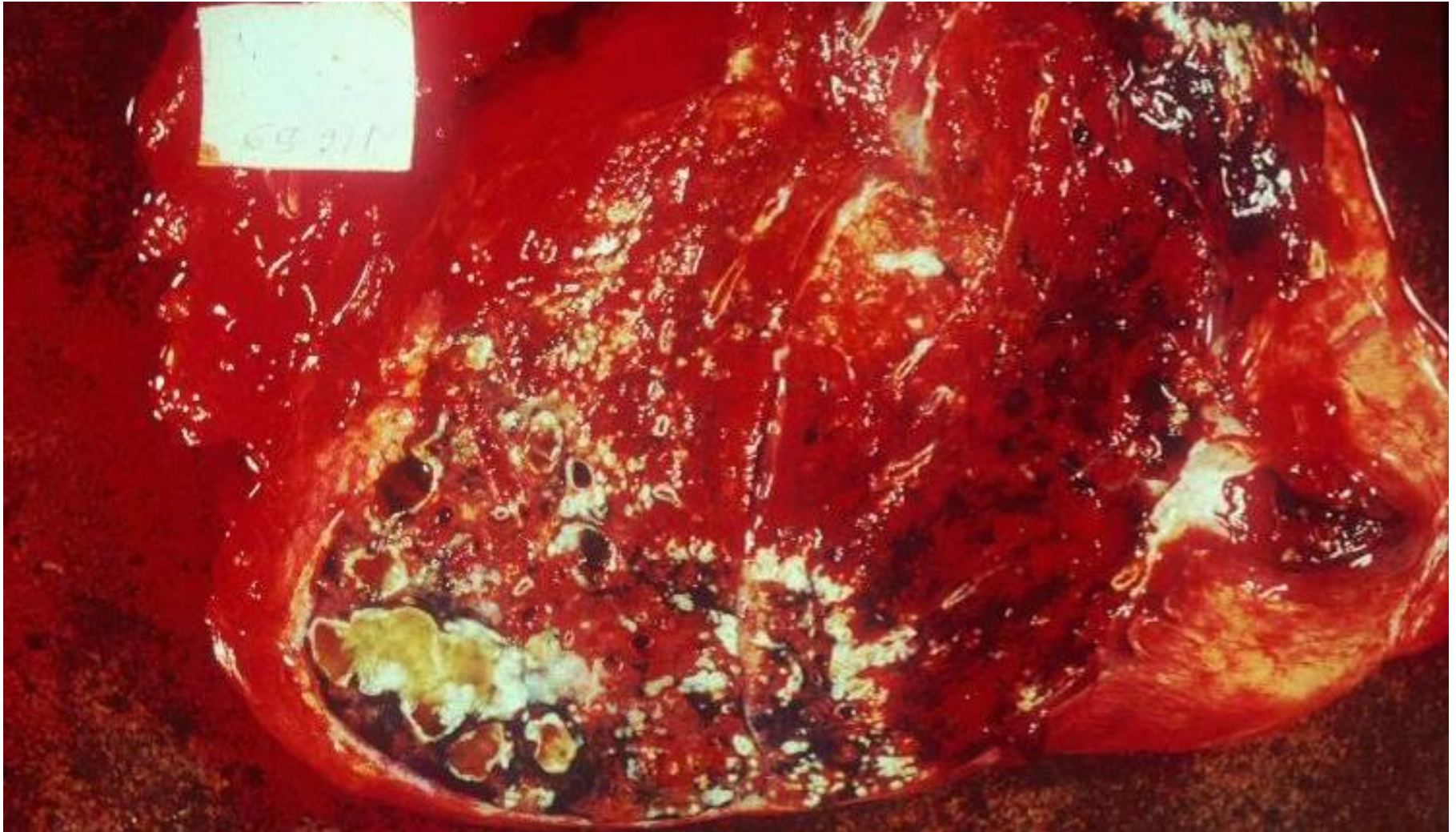
Tuberculose miliaire



Miliaire tuberculeuse



TBC pulmonaire

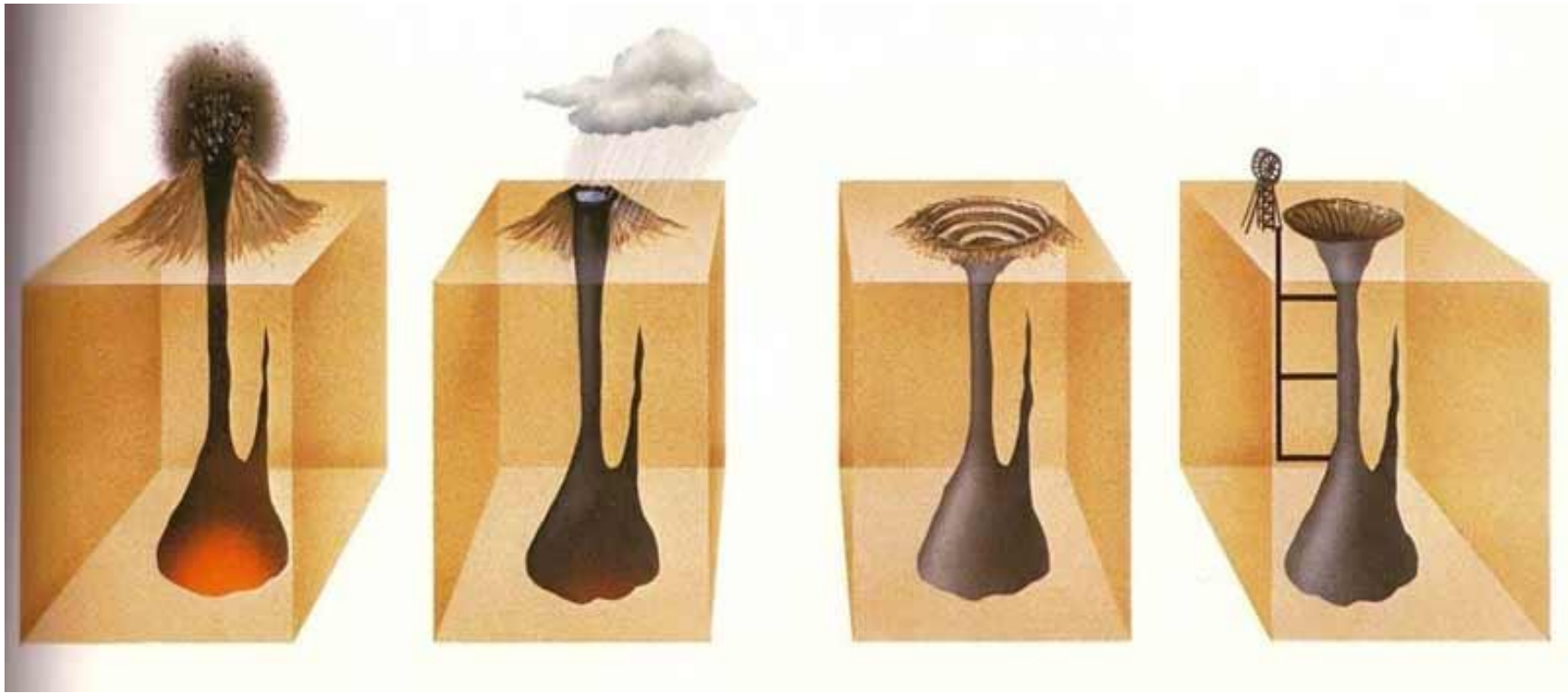




Infiltration grise: aspect de roquefort



anthracose



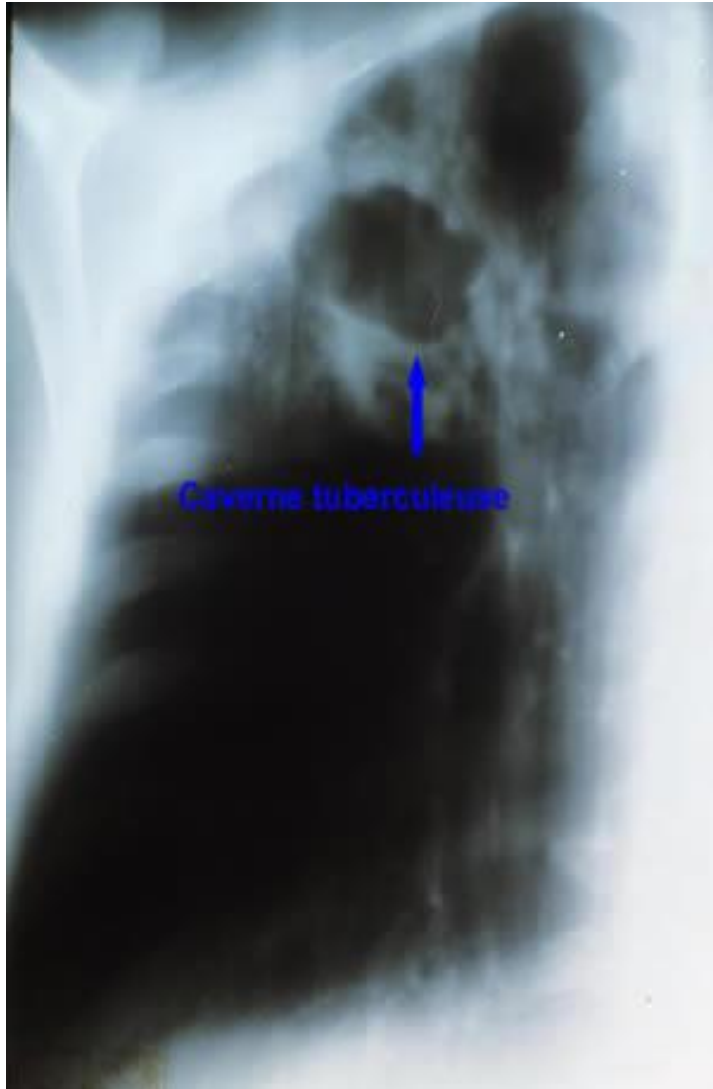
Ulcération lors de la TBC

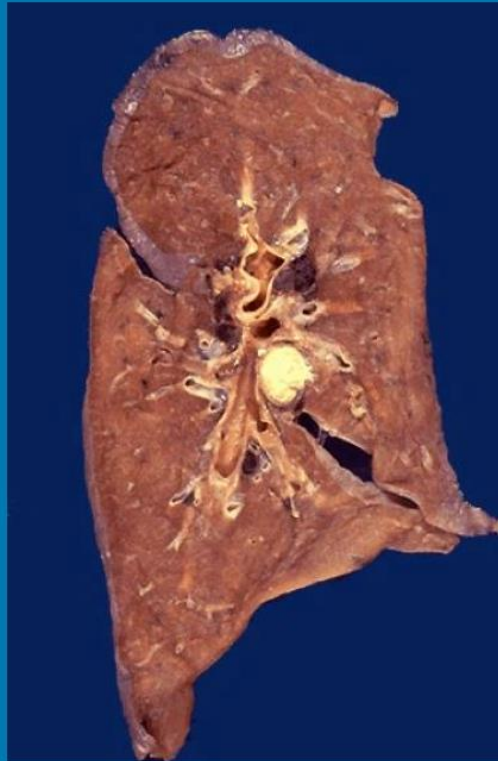


Caverne tuberculeuse



CAVERNE TUBERCULEUSE





Le granulome peut apparaître comme une lésion focale. Ici, une lymphadénopathie tuberculeuse hilare

Réaction folliculaire

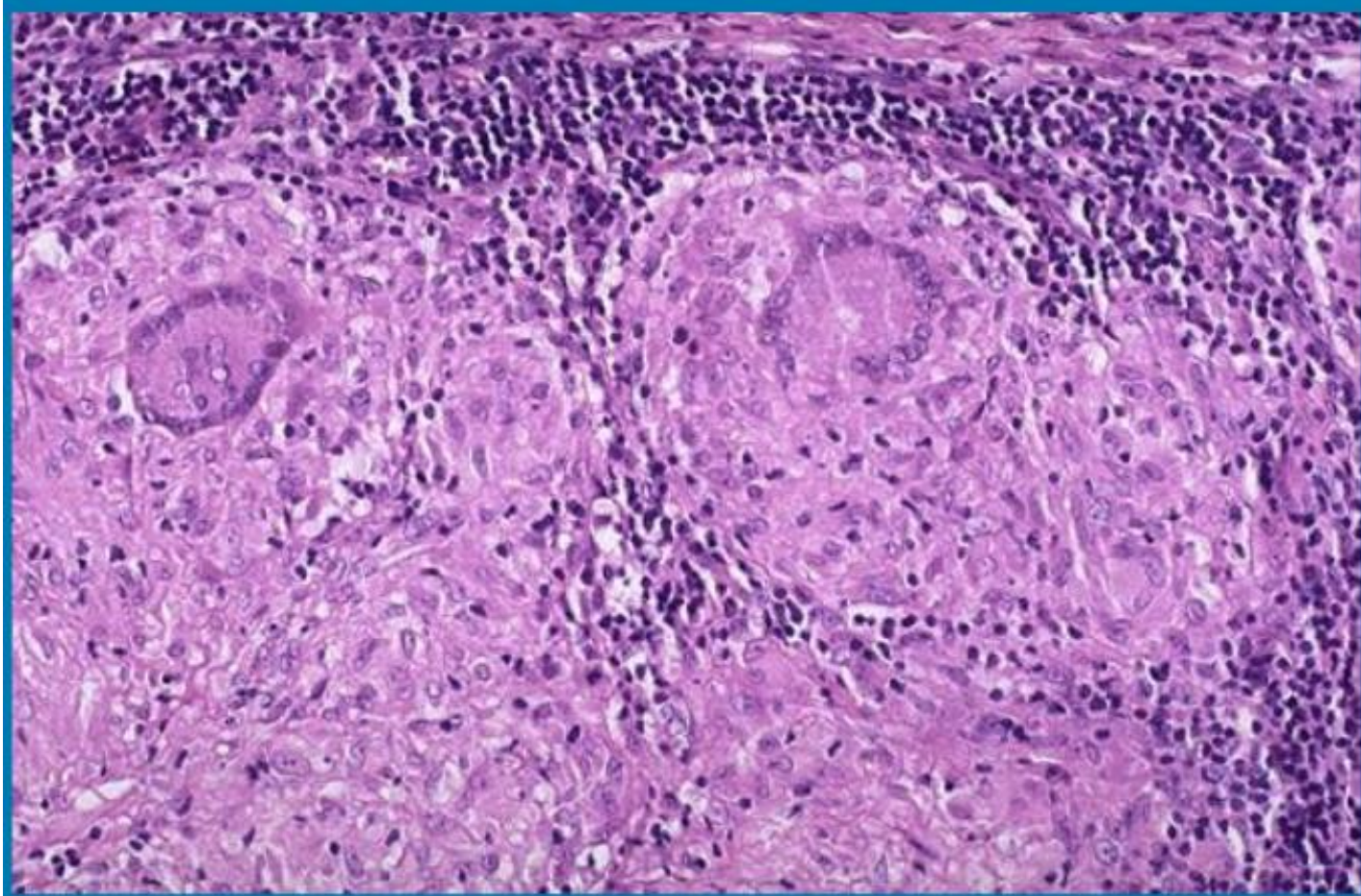
Fibrose

1



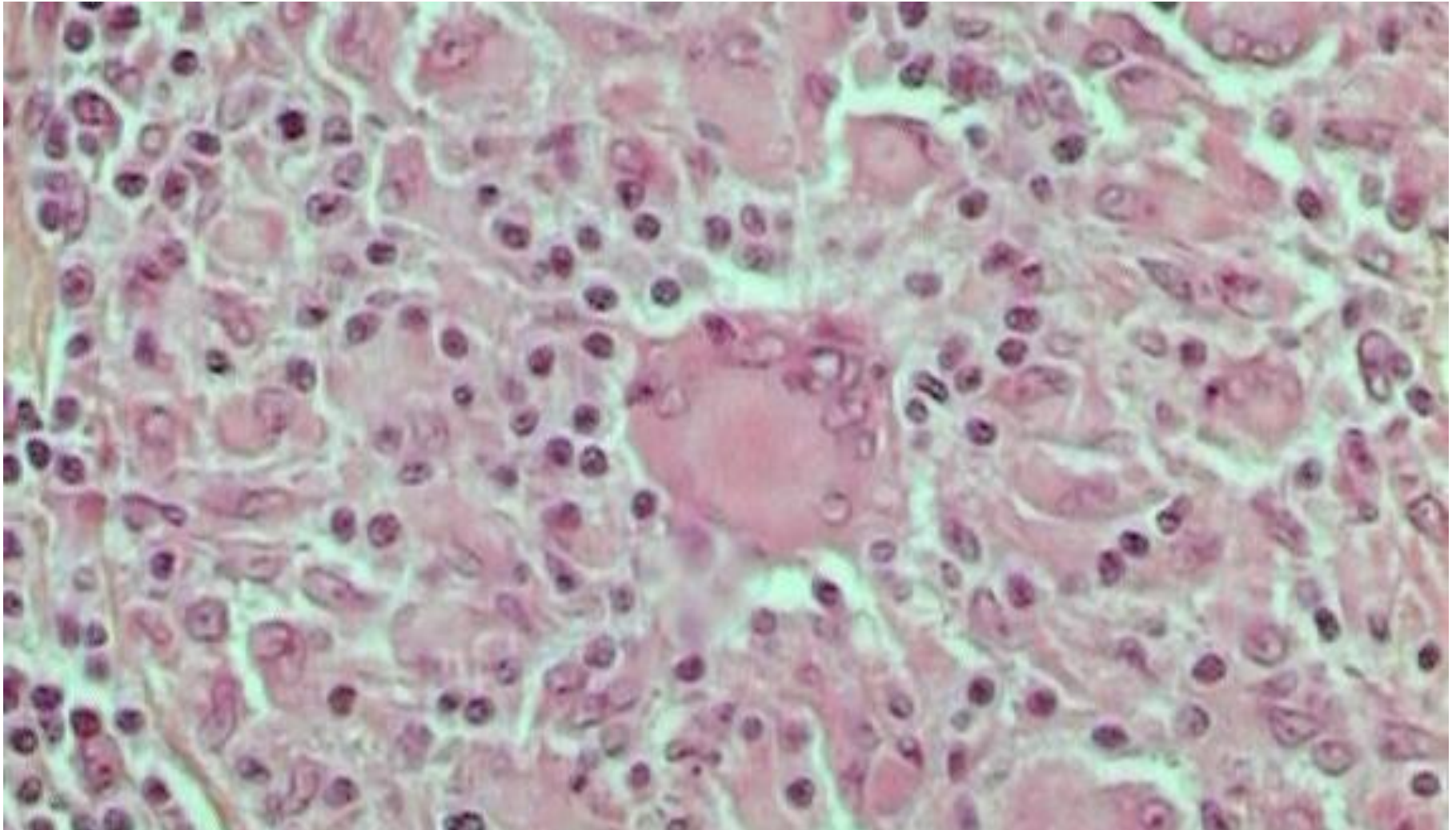
2



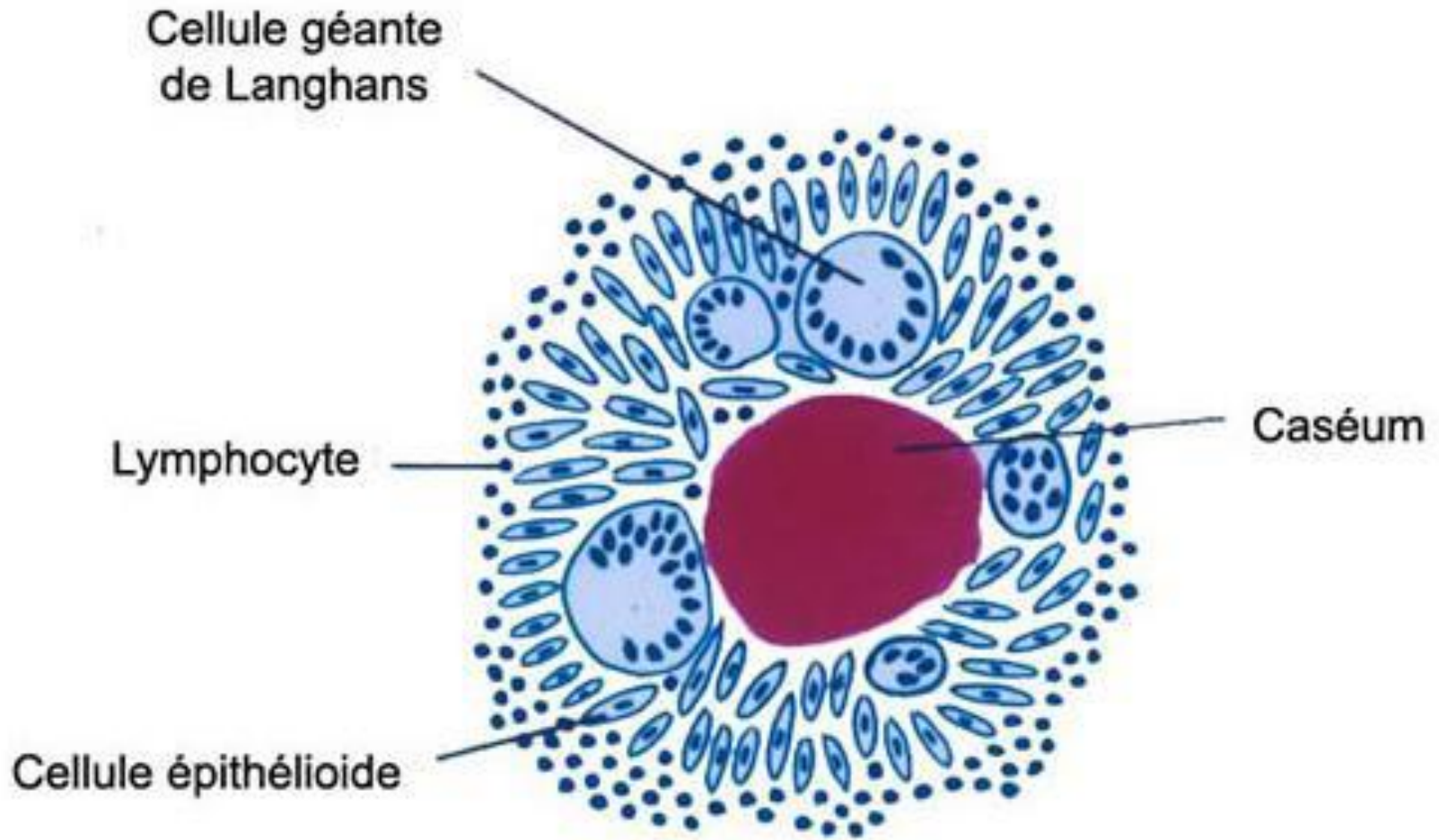


Granulome à cellules de Langhans

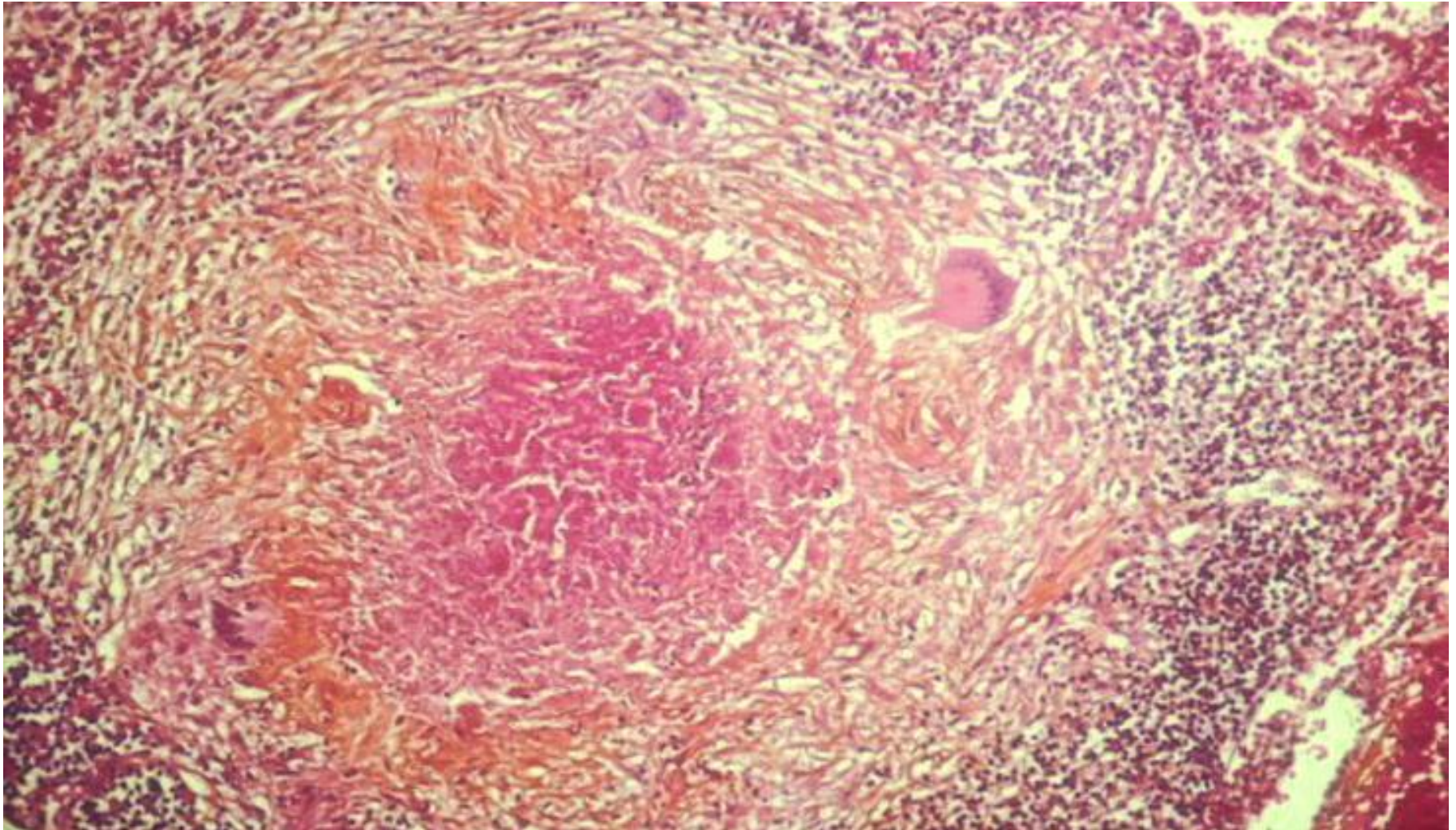
Lésion folliculaire



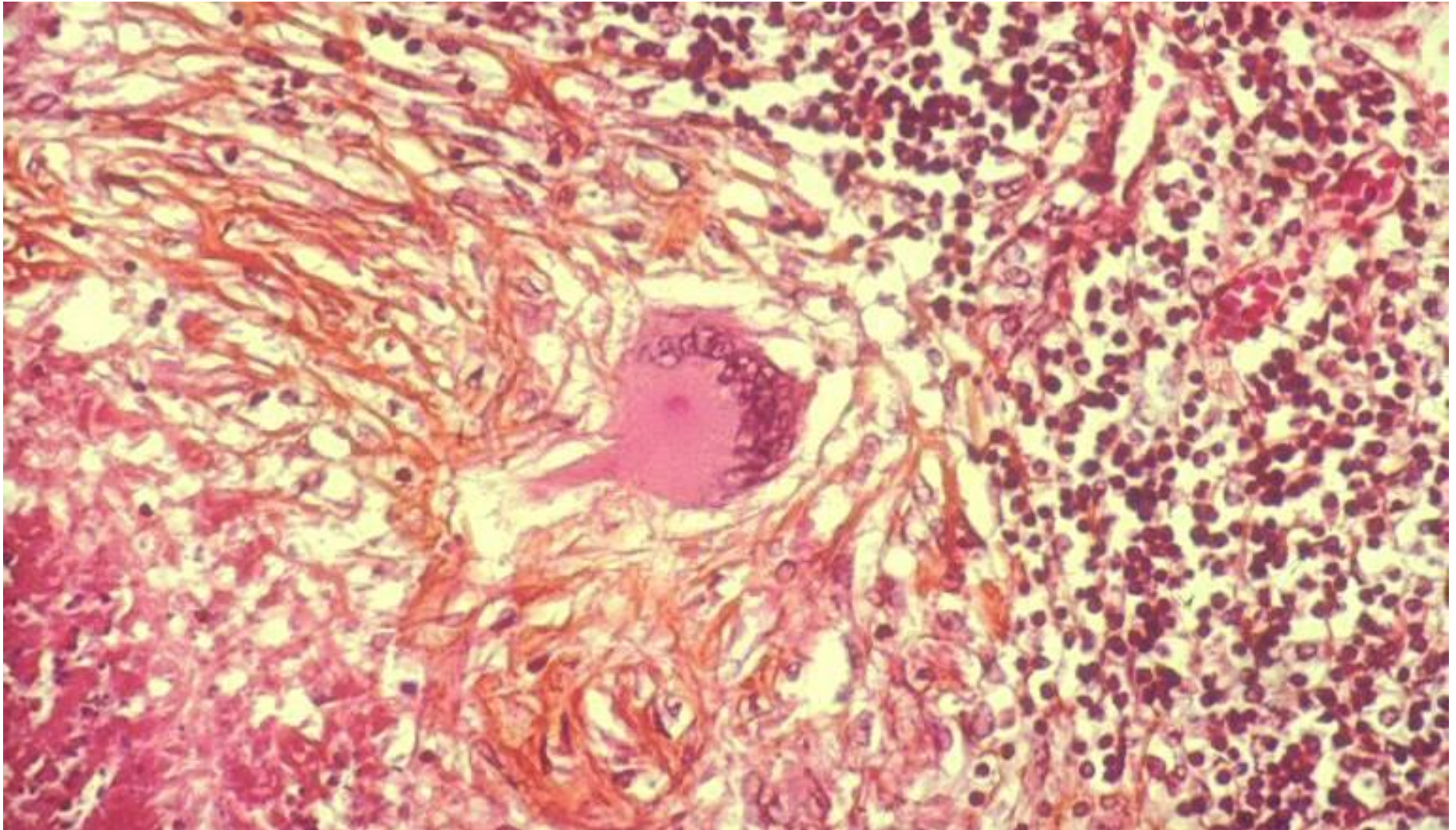
Lésion caséofolliculaire



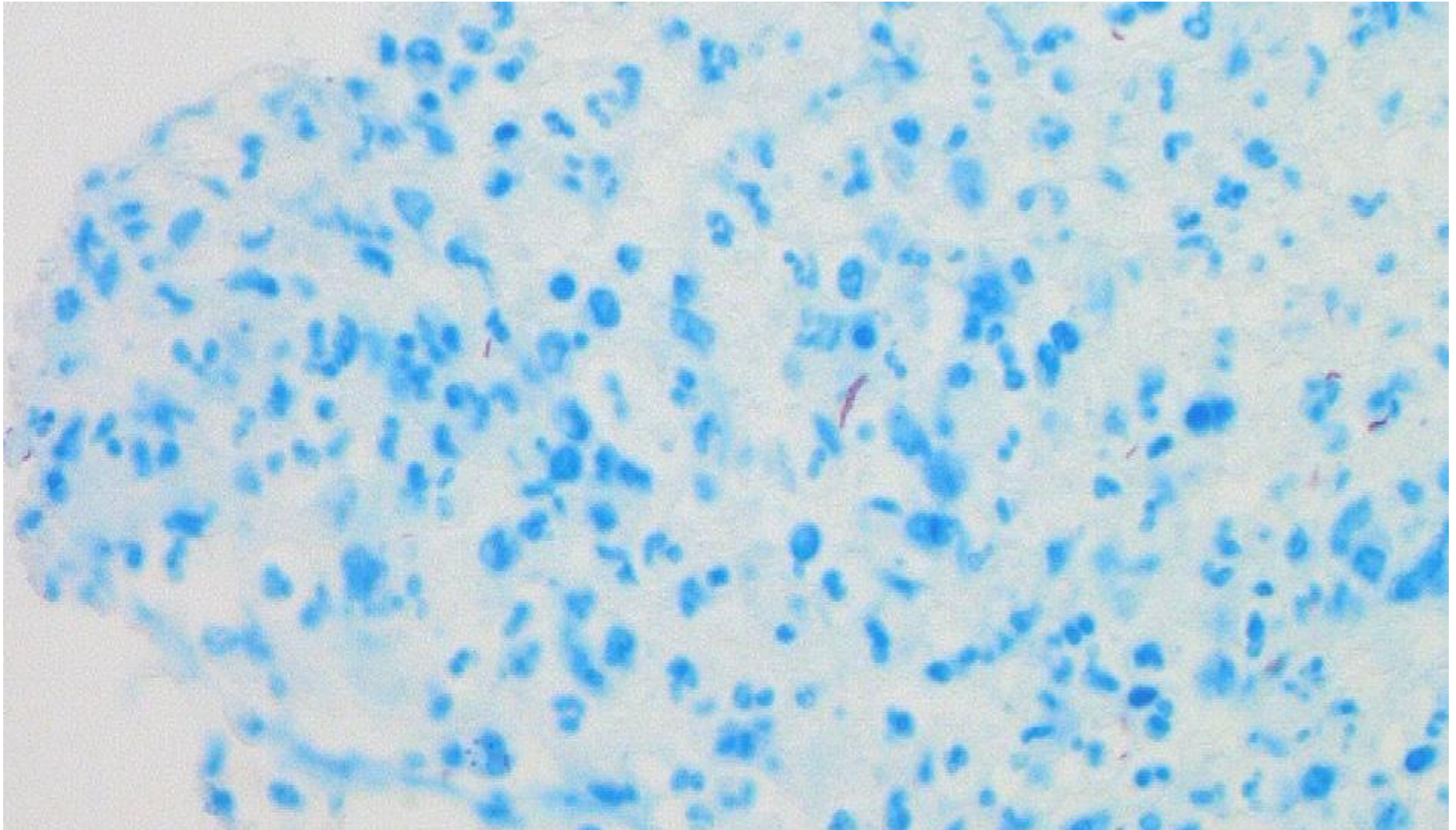
Lésion caséofolliculaire



Cellule géante de Langhans



Coloration de ziehl



Coloration de Ziehl

