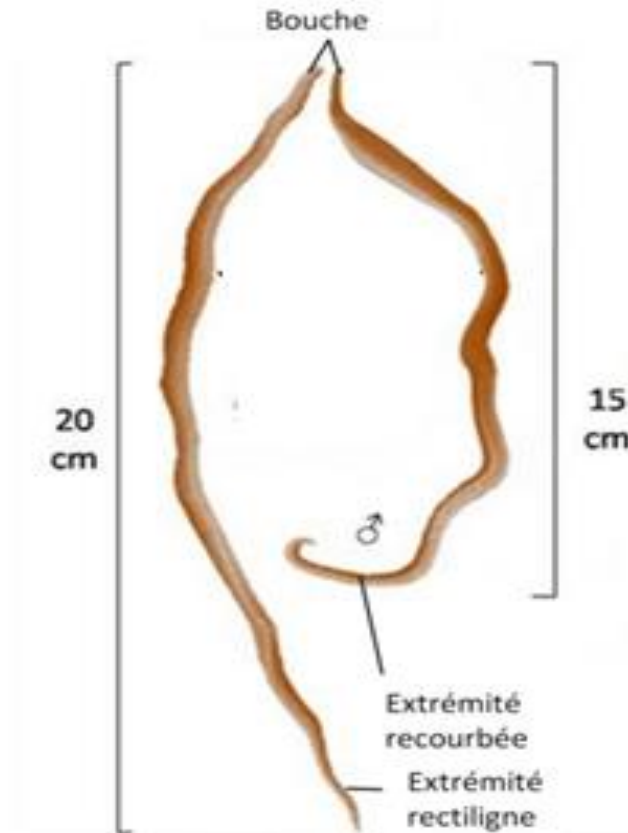


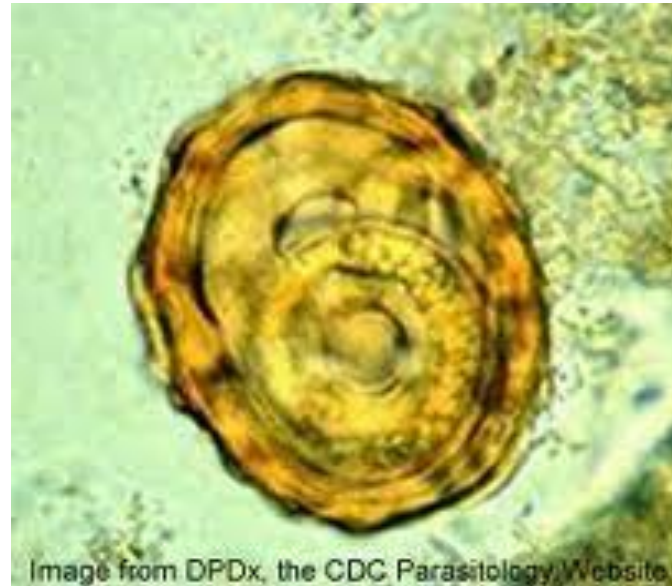
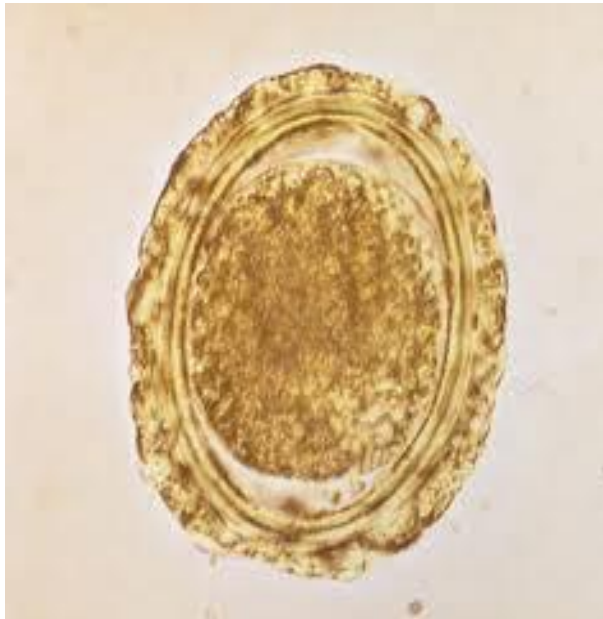
Nématodes et nématodoses

Dr Meradji Assia

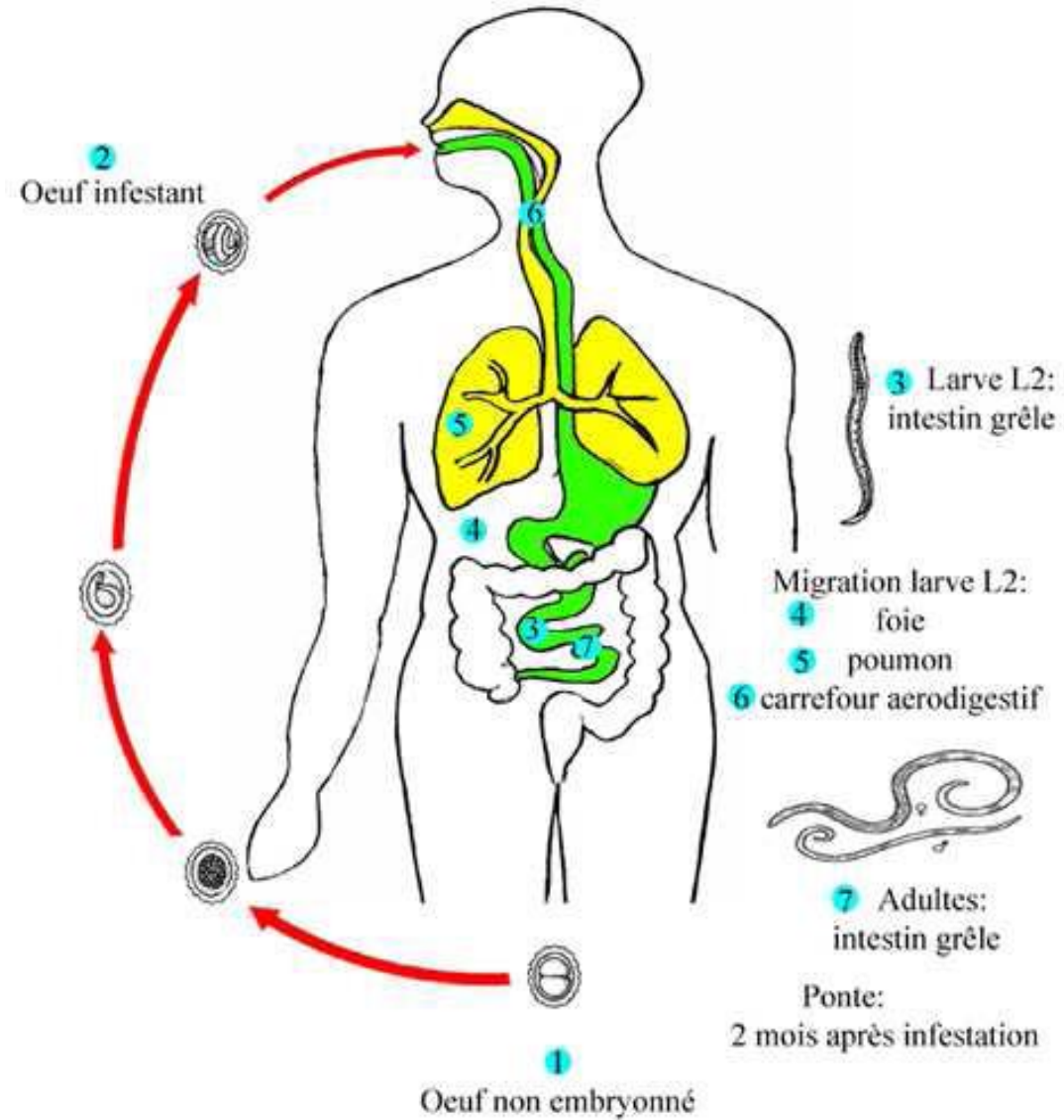
Morphologie d'*Ascaris lumbricoïdes* mâle et femelle



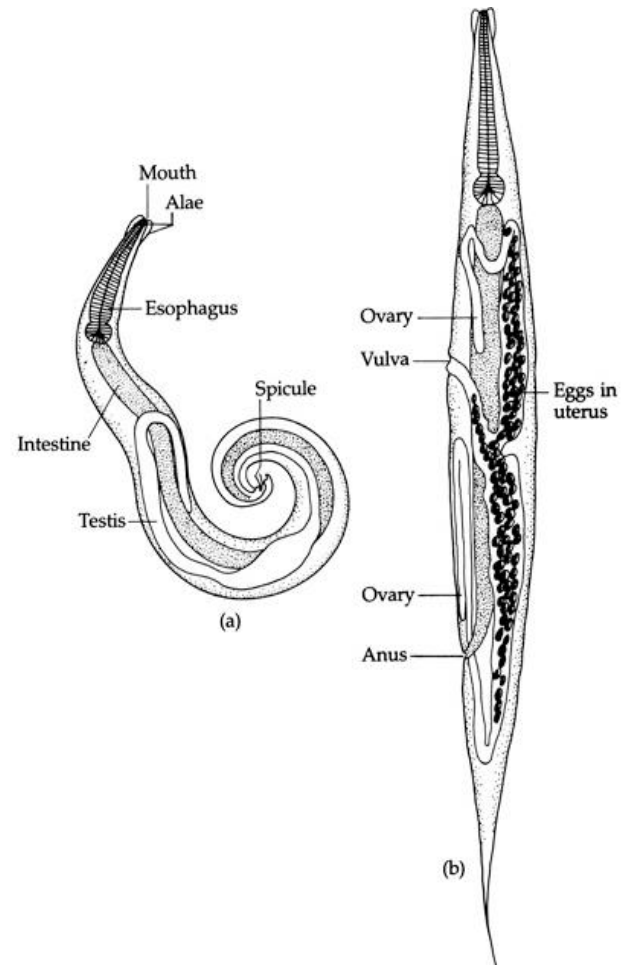
Œufs d'*Ascaris lumbricoides*



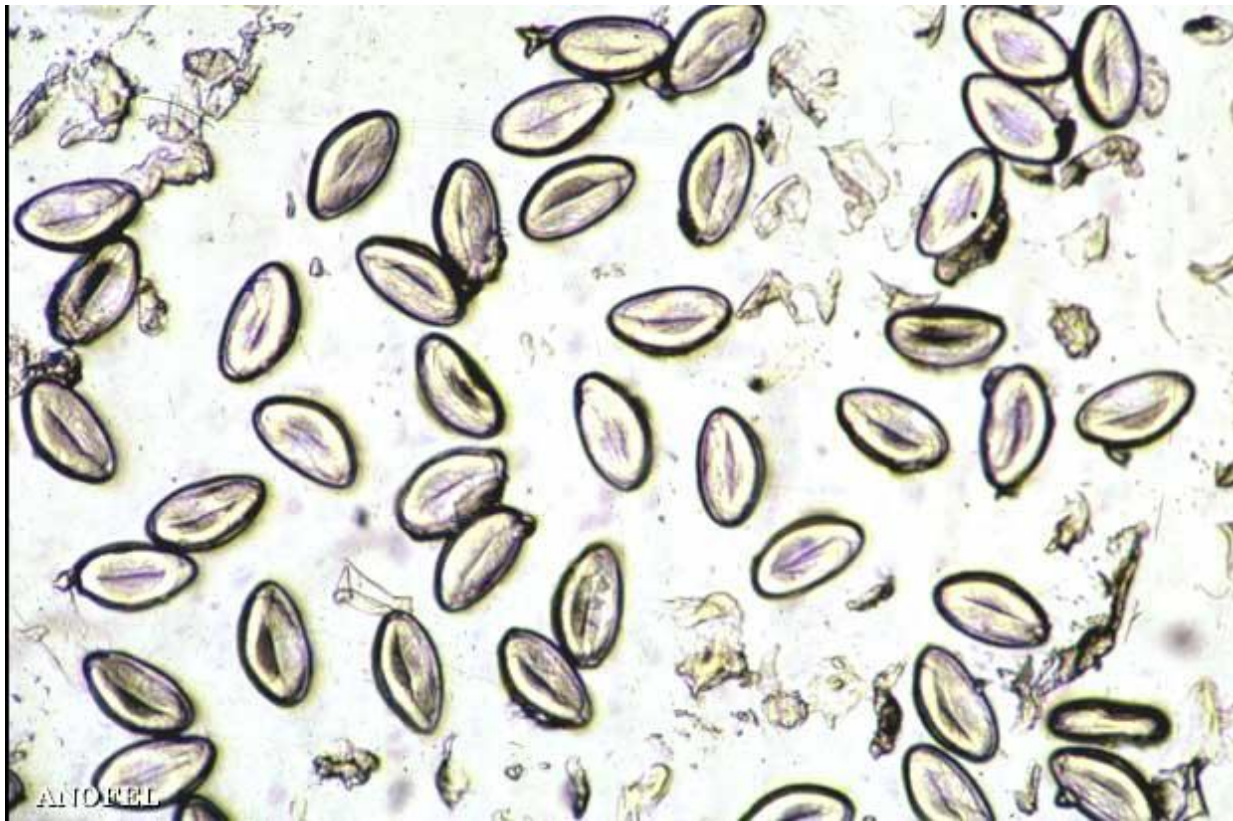
cycle évolutif d'*Ascaris lumbricoides*



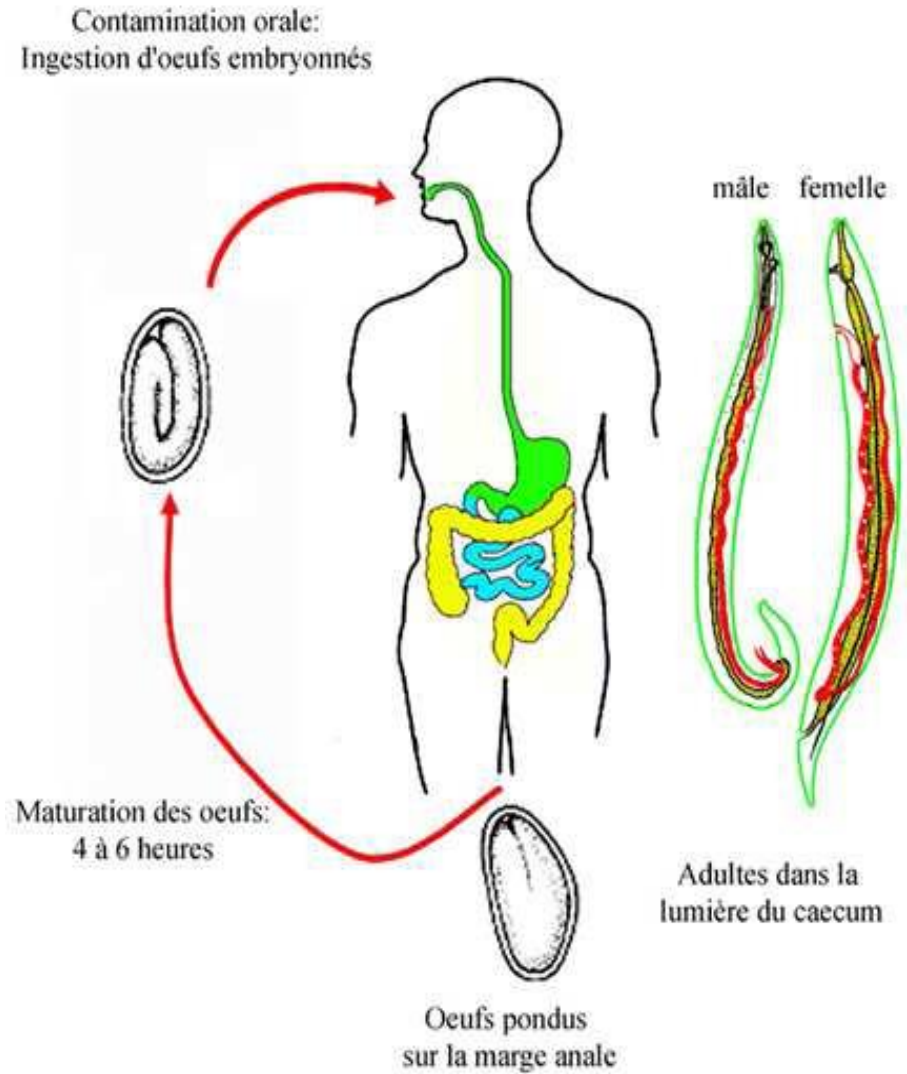
morphologie d'*Enterobius vermicularis* mâle et femelle



œufs d'*Enterobius vermicularis*



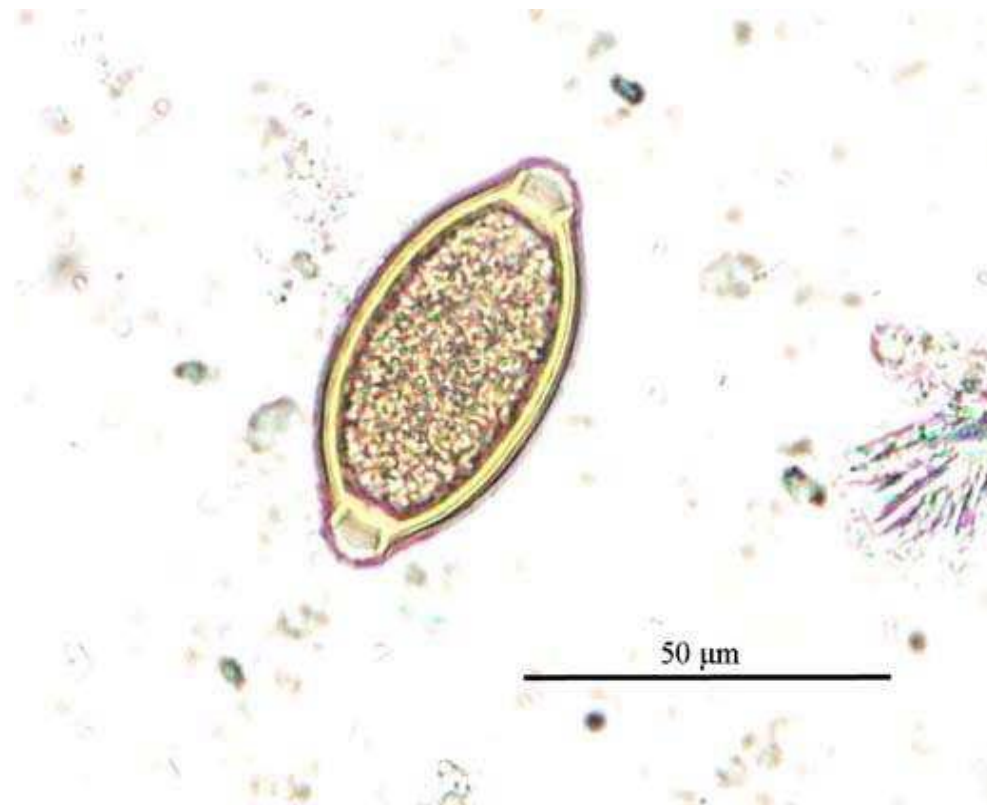
cycle évolutif d'*Enterobius vermicularis*



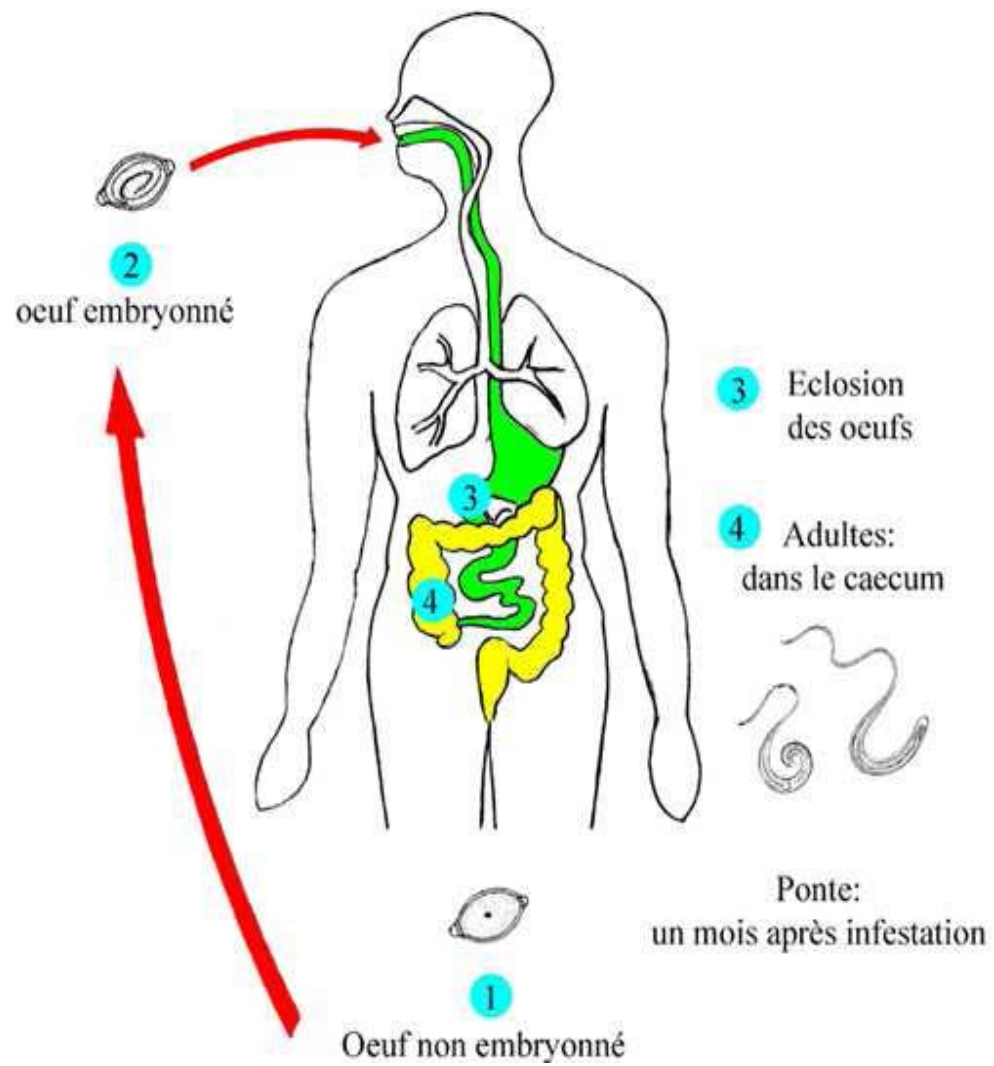
adulte mâle et femelle de *Trichuris trichiura*



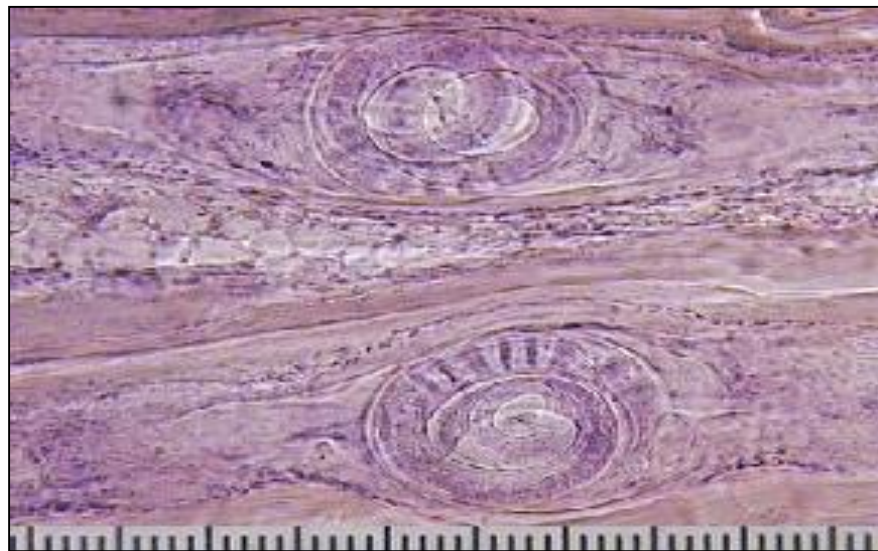
œuf de *Trichuris trichiura*



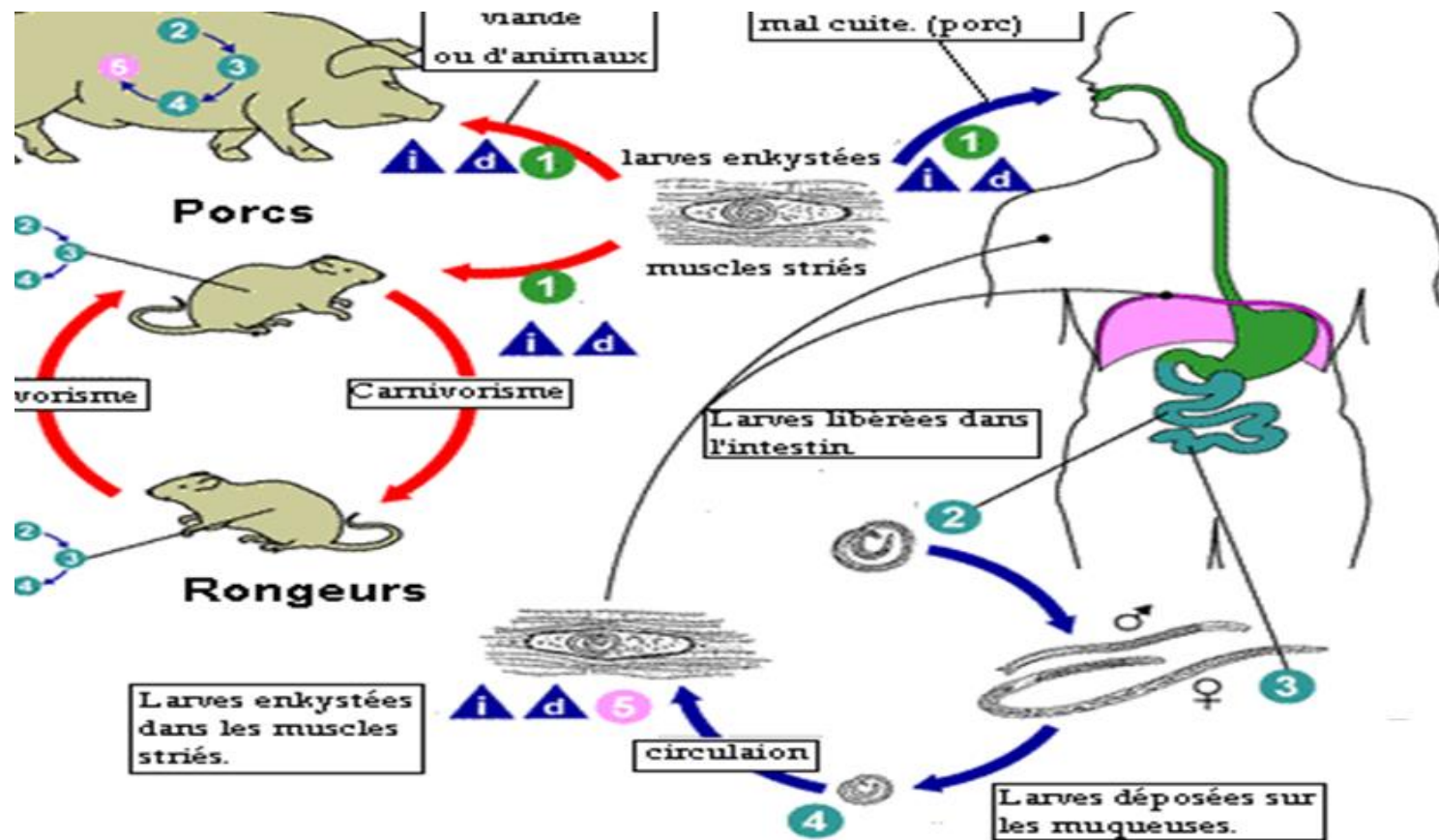
cycle évolutif de *Trichuris trichiura*



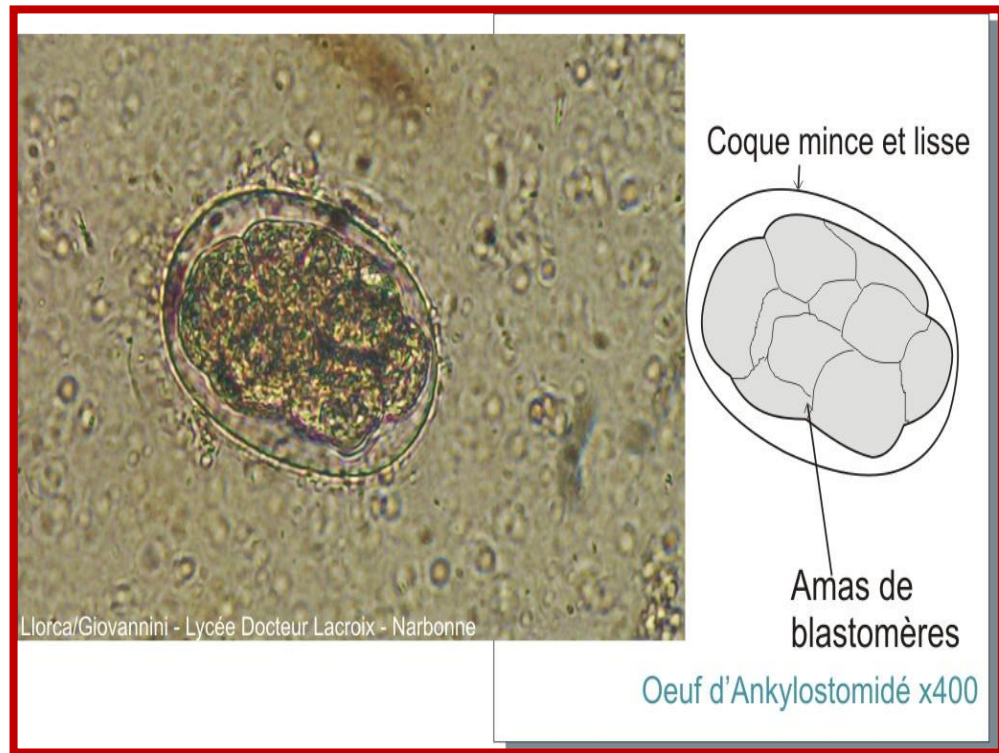
larve de trichine



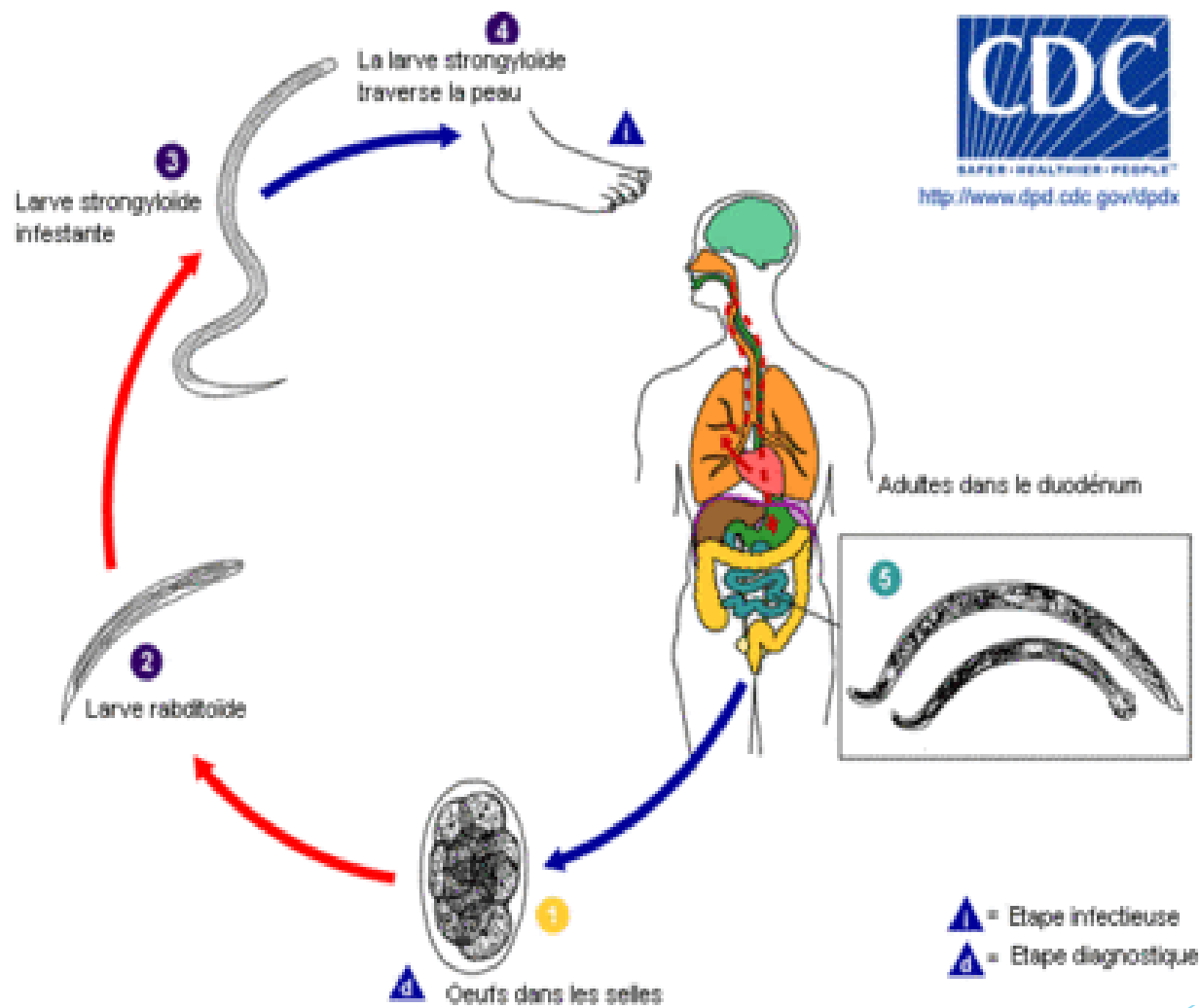
cycle évolutif de *Trichinella sp*



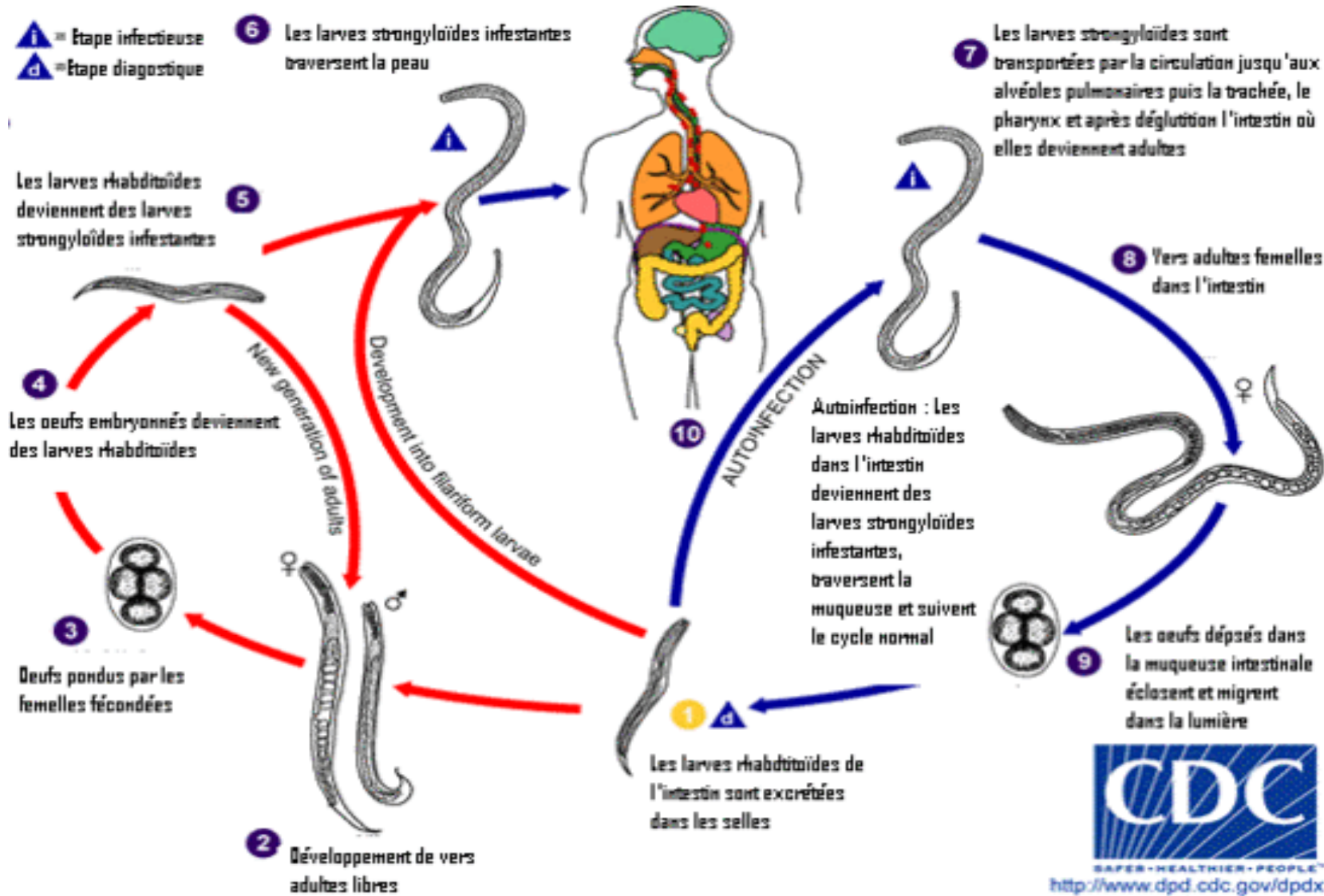
Œuf d'ankylostomidé



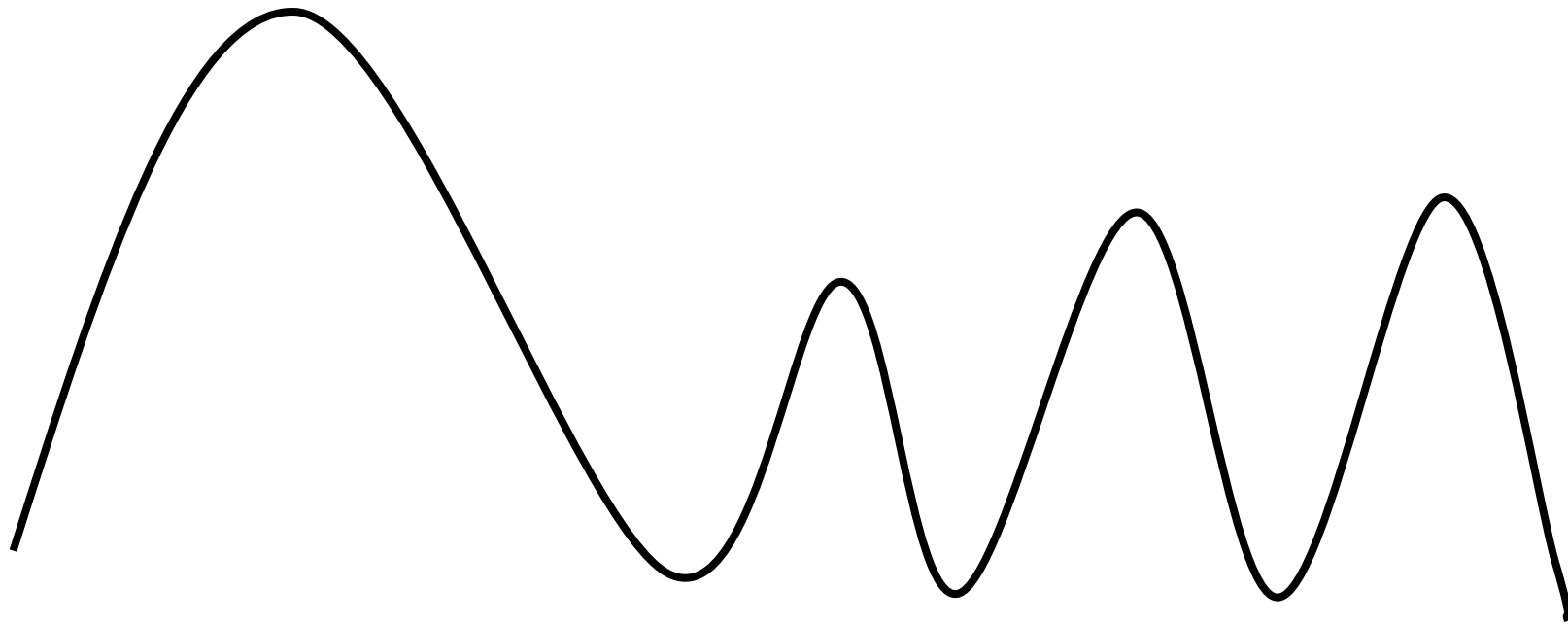
cycle évolutif d'ankylostome



cycle évolutif d'anguillule



Evolution de l'éosinophilie sanguine au cours de l'anguillulose



Technique de Baermann

